

BIS RapidRail[®] Stainless Steel Slide Nut

(M 29 05)

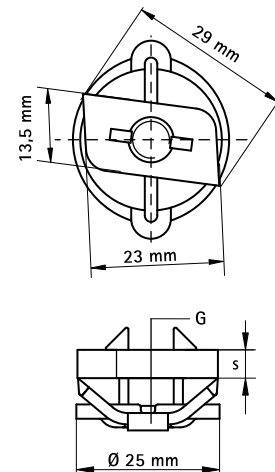
fixing to Walraven RapidRail[®]



Features and benefits

- slide nut with washer and BIS RapidRail[®] spring
- ready-to-use pre-assembled for a quick fixing, and retains assembly in place before final tightening
- material: metal parts made of stainless steel 1.4401 (AISI 316); spring(s) made of POM (polyoxymethylene), blue

Part No.	G	b x s (mm)	T _(inst.) (Nm)	For Rail	F _{a,z} (N)	Pack 1	Pack 2
6517306	M6	13.5 x 4.0	7.5	30x15, 30x20, 30x30	2,000	50	500
6517308	M8	13.5 x 5.0	10.0	30x15, 30x20, 30x30	2,700	50	500
6517310	M10	14.0 x 5.0	10.0	30x15, 30x20, 30x30	2,900	50	500



Complementary

Walraven RapidRail[®] Stainless Steel Fixing Rail

Alternative

BIS RapidRail[®] Stainless Steel Hammerfix