

BIS Heavy Duty Clamp HD1501 (BUP1000)

(A 10 06)

for metal pipes 217 - 509 mm

M16



Features and benefits

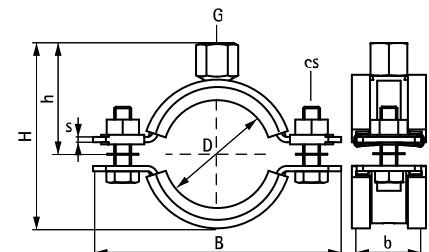
- two-part clamp with two locking bolts
- heavy design
- bolts secured with anti-loss washer
- with CO₂ welded connection nut
- material: steel
- surface protection:
 - product is part of the Walraven BIS UltraProtect® 1000 system
 - suitable for in- and outdoor applications
- surface protection:
 - stands min. 1,000 hours salt spray test (max. 5% red rust) according to ISO 9227
 - noise insulating lining, EPDM rubber, black
 - age resistant lining
 - sound insulating lining according DIN 4109
 - noise reduction according to ISO 3822-1 up to 18 dB(A)



RAL-GZ 655/B
Cert.Nr. 2011-12a

| Part No. | D (mm) | D (°) | DN | G | B (mm) | H (mm) | h (mm) | b x s (mm) | cs | F _{a,z} (N) | RAL | Pack 1 |
|----------|-----------|----------|-----|-----|-----------|-----------|-----------|---------------|-----|-------------------------|------------------|--------|
| 33168227 | 217 - 227 | 8 | 200 | M16 | 322 | 278 | 150 | 38 x 4.0 | M12 | 3,800 | RAL ¹ | 2 |
| 33168250 | 240 - 250 | - | - | M16 | 345 | 302 | 163 | 38 x 4.0 | M12 | 3,800 | RAL ¹ | 2 |
| 33168275 | 265 - 275 | 10 | 250 | M16 | 367 | 327 | 175 | 48 x 5.0 | M12 | 9,200 | RAL ¹ | 2 |
| 33168325 | 315 - 325 | 12 | 300 | M16 | 414 | 374 | 198 | 48 x 5.0 | M12 | 9,200 | RAL ¹ | 2 |
| 33168364 | 354 - 364 | 14 | 350 | M16 | 453 | 412 | 217 | 48 x 5.0 | M12 | 9,200 | RAL ¹ | 2 |
| 33168408 | 398 - 408 | 16 | 400 | M16 | 497 | 456 | 239 | 48 x 5.0 | M12 | 9,200 | RAL ¹ | 2 |
| 33168458 | 448 - 458 | 18 | 450 | M16 | 548 | 506 | 264 | 48 x 5.0 | M12 | 9,200 | RAL ¹ | 2 |
| 33168509 | 499 - 509 | 20 | 500 | M16 | 599 | 557 | 289 | 48 x 5.0 | M12 | 9,200 | RAL ¹ | 2 |

RAL¹ = tested, certified and monitored by a third party according to RAL-GZ 655/B.
For detailed technical information about our RAL marked products, please see the RAL datasheet in our web catalogue.



Complementary

Walraven RapidStrut® Fixing System
Walraven Fixing Accessories
Walraven Fastenings

Complementary

BIS Silicone Profile