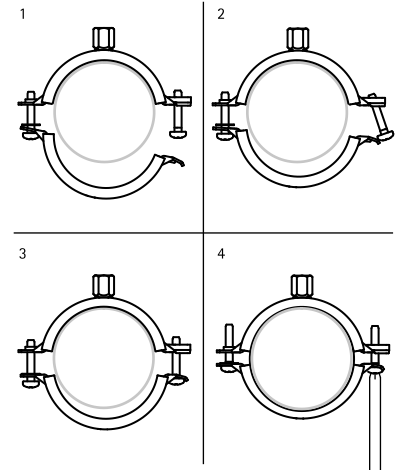


BIS Bifix[®] G2 with Lining (M8) (BUP1000)

(A 05 48)

for metal pipes 10 - 83 mm

M8



Features and benefits

- two-screw clamp
- with quick locking system
- material: steel
- surface protection:
 - product is part of the BIS UltraProtect[®] 1000 system
 - suitable for in- and outdoor applications
 - stands min. 1,000 hours salt spray test (max. 5% red rust) according to ISO 9227
- noise insulating lining, EPDM rubber, black
- sound insulating lining according DIN 4109

| Part No. | D (mm) | D (") | DN | G | B (mm) | h (mm) | b x s (mm) | F _{a,z} (N) | Pack 1 |
|-----------|-----------|----------|----|----|-----------|-----------|---------------|-------------------------|--------|
| 311 8 014 | 10 - 14 | 1/4 | 8 | M8 | 59 | 21 | 20 x 1.25 | 700 | 50 |
| 311 8 019 | 15 - 19 | 3/8 | 10 | M8 | 63 | 23 | 20 x 1.25 | 700 | 50 |
| 311 8 023 | 20 - 23 | 1/2 | 15 | M8 | 68 | 25 | 20 x 1.25 | 700 | 50 |
| 311 8 028 | 25 - 28 | 3/4 | 20 | M8 | 74 | 28 | 20 x 1.25 | 700 | 50 |
| 311 8 035 | 31 - 35 | 1 | 25 | M8 | 80 | 31 | 20 x 1.25 | 700 | 50 |
| 311 8 039 | 36 - 39 | - | - | M8 | 84 | 33 | 20 x 1.25 | 700 | 50 |
| 311 8 045 | 40 - 45 | 1 1/4 | 32 | M8 | 91 | 37 | 20 x 1.25 | 700 | 50 |
| 311 8 052 | 48 - 52 | 1 1/2 | 40 | M8 | 97 | 40 | 20 x 1.25 | 700 | 50 |
| 311 8 058 | 54 - 58 | - | - | M8 | 104 | 43 | 20 x 1.25 | 700 | 50 |
| 311 8 064 | 60 - 64 | 2 | 50 | M8 | 109 | 46 | 20 x 1.25 | 700 | 50 |
| 311 8 070 | 66 - 70 | - | - | M8 | 118 | 50 | 20 x 1.50 | 800 | 50 |
| 311 8 079 | 75 - 79 | 2 1/2 | 65 | M8 | 125 | 54 | 20 x 1.50 | 800 | 50 |
| 311 8 083 | 80 - 83 | - | - | M8 | 131 | 57 | 20 x 1.50 | 800 | 50 |

