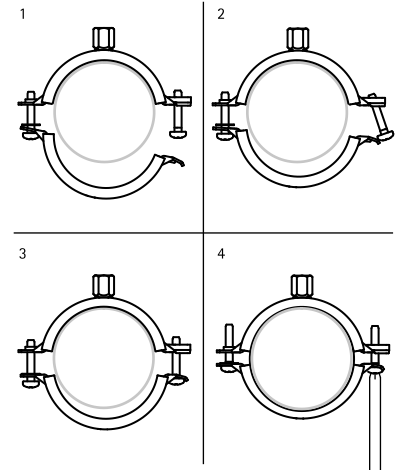


BIS Bifix® G2 with Lining (M8/10) (BUP1000)

(A 05 64)

for metal pipes 10 - 169 mm

M8/10



Features and benefits

- two-screw clamp
- with quick locking system
- material: steel
- surface protection:
 - product is part of the BIS UltraProtect® 1000 system
 - suitable for in- and outdoor applications
- surface protection:
 - stands min. 1,000 hours salt spray test (max. 5% red rust) according to ISO 9227
- noise insulating lining, EPDM rubber, black
- sound insulating lining according DIN 4109

Part No.	D (mm)	D (°)	DN	G	B (mm)	h (mm)	b x s (mm)	F _{az} (N)	Pack 1
3108014	10 - 14	1/4	8	M8/10	59	29	20 x 1.25	700	50
3108019	15 - 19	3/8	10	M8/10	63	31	20 x 1.25	700	50
3108023	20 - 23	1/2	15	M8/10	68	33	20 x 1.25	700	50
3108028	25 - 28	3/4	20	M8/10	74	36	20 x 1.25	700	50
3108035	31 - 35	1	25	M8/10	80	39	20 x 1.25	700	50
3108039	36 - 39	-	-	M8/10	84	41	20 x 1.25	700	50
3108045	40 - 45	1 1/4	32	M8/10	91	45	20 x 1.25	700	50
3108052	48 - 52	1 1/2	40	M8/10	97	48	20 x 1.25	700	50
3108058	54 - 58	-	-	M8/10	104	51	20 x 1.25	700	50
3108064	60 - 64	2	50	M8/10	109	54	20 x 1.25	700	50
3108070	66 - 70	-	-	M8/10	118	58	20 x 1.50	800	50
3108079	75 - 79	2 1/2	65	M8/10	125	62	20 x 1.50	800	50
3108083	80 - 83	-	-	M8/10	131	65	20 x 1.50	800	50
3108091	88 - 91	3	80	M8/10	142	70	23 x 2.00	1,700	25
3108105	100 - 105	-	-	M8/10	155	77	23 x 2.00	1,700	25
3108115	108 - 115	4	100	M8/10	163	81	23 x 2.00	1,700	25
3108130	125 - 130	-	-	M8/10	180	89	23 x 2.00	1,700	25
3108140	133 - 140	5	125	M8/10	189	94	23 x 2.00	1,700	25
3108160	152 - 160	-	-	M8/10	208	102	23 x 2.00	1,700	25
3108169	165 - 169	6	150	M8/10	225	111	25 x 2.50	2,000	10

