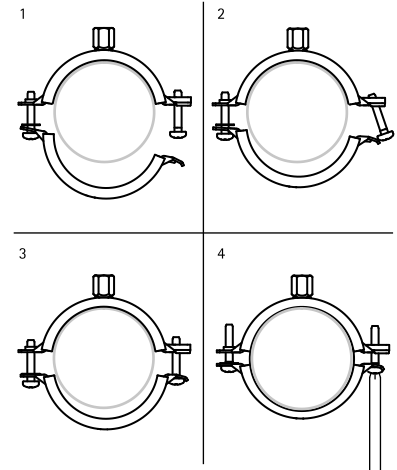


BIS Bifix® G2 with Lining (M10) (BUP1000)

(A 05 76)

for metal pipes 10 - 225 mm

M10



Features and benefits

- two-screw clamp
- with quick locking system
- material: steel
- surface protection:
 - product is part of the BIS UltraProtect® 1000 system
 - suitable for in- and outdoor applications
 - stands min. 1,000 hours salt spray test (max. 5% red rust) according to ISO 9227
- noise insulating lining, EPDM rubber, black
- sound insulating lining according DIN 4109

Part No.	D (mm)	D (")	DN	G	B (mm)	h (mm)	b x s (mm)	F _{a,z} (N)	Pack 1
312 8 014	10 - 14	1/4	8	M10	59	21	20 x 1.25	800	50
312 8 019	15 - 19	3/8	10	M10	63	23	20 x 1.25	800	50
312 8 023	20 - 23	1/2	15	M10	68	25	20 x 1.25	800	50
312 8 028	25 - 28	3/4	20	M10	74	28	20 x 1.25	800	50
312 8 035	31 - 35	1	25	M10	80	31	20 x 1.25	800	50
312 8 039	36 - 39	-	-	M10	84	33	20 x 1.25	800	50
312 8 045	40 - 45	1 1/4	32	M10	91	37	20 x 1.25	800	50
312 8 052	48 - 52	1 1/2	40	M10	97	40	20 x 1.25	800	50
312 8 058	54 - 58	-	-	M10	104	43	20 x 1.25	800	50
312 8 064	60 - 64	2	50	M10	109	46	20 x 1.25	800	50
312 8 070	66 - 70	-	-	M10	118	52	20 x 1.50	1,000	50
312 8 079	75 - 79	2 1/2	65	M10	125	56	20 x 1.50	1,000	50
312 8 083	80 - 83	-	-	M10	131	59	20 x 1.50	1,000	50
312 8 091	88 - 91	3	80	M10	142	64	23 x 2.00	1,800	25
312 8 105	100 - 105	-	-	M10	155	71	23 x 2.00	1,800	25
312 8 115	108 - 115	4	100	M10	163	75	23 x 2.00	1,800	25
312 8 130	125 - 130	-	-	M10	180	83	23 x 2.00	1,800	25
312 8 140	133 - 140	5	125	M10	189	88	23 x 2.00	1,800	25
312 8 160	152 - 160	-	-	M10	208	97	23 x 2.00	1,800	25
312 8 169	165 - 169	6	150	M10	225	103	25 x 2.50	2,500	10
312 8 180	176 - 180	-	-	M10	238	109	25 x 2.50	2,500	15
312 8 200	192 - 200	-	-	M10	257	119	25 x 2.50	2,500	15
312 8 210	205 - 210	-	-	M10	269	125	25 x 2.50	2,500	10
312 8 225	219 - 225	8	200	M10	283	132	25 x 2.50	2,500	10

