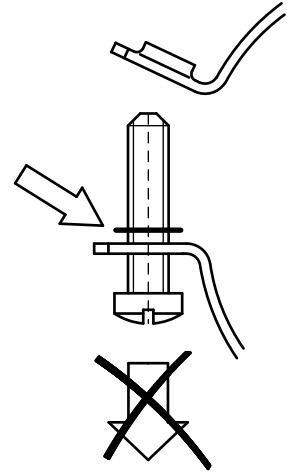
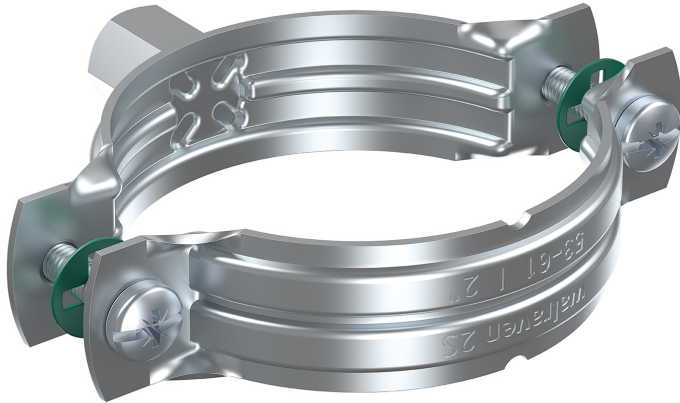


2S Clamp (M8)

for insulated pipe, steel, copper, cast iron and plastic (multilayer) pipe 10 - 67 mm

M8

(B 05 23)



Features and benefits

- gapless range
- anti loss washers prevent screws from falling out during installation
- perfect solution for insulated pipe supports
- material: steel
- zinc plated

Part No.	D (mm)	D (°)	DN	G	B (mm)	H (mm)	h (mm)	b x s (mm)	cs	F _{a,z} (N)	Pack 1
33025014	10 - 14	1/8 - 1/4	6 - 8	M8	46	27	17	20 x 1.00	M5	700	50
33025019	15 - 19	3/8	10	M8	51	32	20	20 x 1.00	M5	700	50
33025024	20 - 24	1/2	15	M8	56	37	22	20 x 1.00	M5	700	50
33025030	25 - 30	3/4	20	M8	62	43	25	20 x 1.00	M5	700	50
33025037	31 - 37	1	25	M8	69	50	29	20 x 1.00	M5	700	50
33025046	38 - 46	1 1/4	32	M8	78	60	34	20 x 1.25	M5	950	50
33025052	47 - 52	1 1/2	40	M8	84	66	37	20 x 1.25	M5	950	50
33025061	53 - 61	2	50	M8	93	75	41	20 x 1.25	M5	950	50
33025067	62 - 67	-	-	M8	99	81	44	20 x 1.25	M5	950	50

