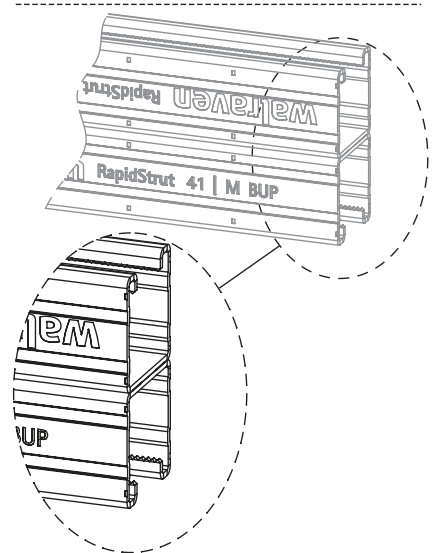
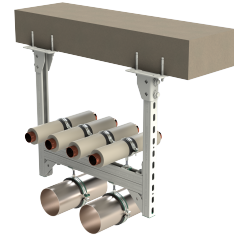


# Walraven RapidStrut® Channel Double (pg)

(H 04 42)

for medium weight fixing applications



## Features and Benefits

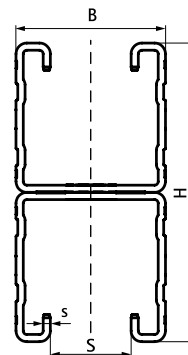
- universal rail system
- with continuous perforation
- inward formed flanges with serrated profile for extra grip
- with sawing marks each 50 mm on both sides
- material: steel 1.0242 (S250GD)
- pre-galvanized
- version 62|H Double tested for fire safety
- for more information about the max. allowed load ( $F_{a,z}$ ) please refer to the loading tables or our online datasheet 'Walraven RapidStrut® Data Sheet'

| Part No. | L   | B    | H            | s    | S    | Pack 1 | App. |
|----------|-----|------|--------------|------|------|--------|------|
|          |     | (mm) | (mm)         | (mm) | (mm) |        |      |
| 65015626 | 6 m | 41   | 42 (21 x 2)  | 2.00 | 22   | 150    | m.   |
| 65015646 | 6 m | 41   | 82 (41 x 2)  | 2.00 | 22   | 150    | m.   |
| 65015666 | 6 m | 41   | 124 (62 x 2) | 2.50 | 22   | 150    | m.   |

*For more information about the max. allowed load ( $F_{a,z}$ ) please refer to the loading tables or our online datasheet 'Walraven RapidStrut® Data Sheet'.*



62|H Double only



## Complementary

- Walraven RapidStrut® Slide Nut G2 (BUP1000)
- Walraven RapidStrut® Hammerfix G2 (BUP1000)
- Walraven Strut Washer - U-shaped

## Alternative

- Walraven RapidStrut® Channel Double (BUP1000)