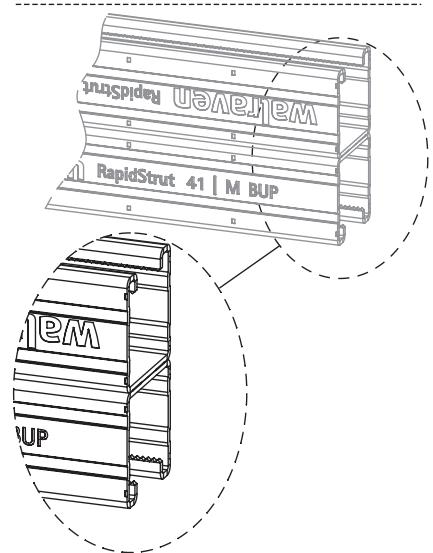
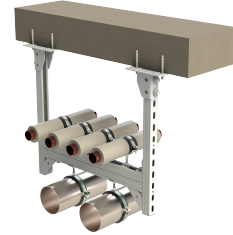


Walraven RapidStrut® Channel Double (BUP1000)

(H 04 50)

for medium weight fixing applications



Features and Benefits

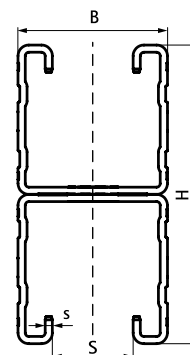
- universal rail system
- with continuous perforation
- inward formed flanges with serrated profile for extra grip
- with sawing marks each 50 mm on both sides
- material: steel 1.0242 (S250GD)
- surface protection:
 - product is part of the Walraven BIS UltraProtect® 1000 system
 - suitable for in- and outdoor applications
 - stands min. 1,000 hours salt spray test (max. 5% red rust) according to ISO 9227
- version 62|H Double tested for fire safety
- for more information about the max. allowed load ($F_{a,z}$) please refer to the loading tables or our online datasheet 'Walraven RapidStrut® Data Sheet'



62|H Double only

| Part No. | L | B (mm) | H (mm) | s (mm) | S (mm) | BndS | App. |
|----------|-----|-----------|------------|-----------|-----------|------|------|
| 65018626 | 6 m | 41 | 42 (21x2) | 2,00 | 22 | 150 | m. |
| 65018646 | 6 m | 41 | 82 (41x2) | 2,00 | 22 | 150 | m. |
| 65018666 | 6 m | 41 | 124 (62x2) | 2,50 | 22 | 90 | m. |

For more information about the max. allowed load ($F_{a,z}$) please refer to the loading tables or our online datasheet 'Walraven RapidStrut® Data Sheet'.



Complementary

- Walraven RapidStrut® Slide Nut G2 (BUP1000)
- Walraven RapidStrut® Hammerfix G2 (BUP1000)
- Walraven Strut Washer - U-shaped

Alternative

- Walraven RapidStrut® Channel Double (pg)