

# Walraven RapidRail® Stainless Steel Slide Nut

fixing to Walraven RapidRail®

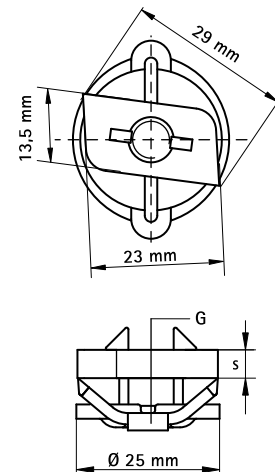
(M 29 05)



## Features and Benefits

- slide nut with washer and BIS RapidRail® spring
- ready-to-use pre-assembled for a quick fixing, and retains assembly in place before final tightening
- material: metal parts made of stainless steel 1.4401 (AISI 316); spring(s) made of POM (polyoxymethylene), blue

Part No.	G	b x s (mm)	For Rail	F <sub>a,z</sub> (N)	Pack 1	Pack 2
6517306	M6	13.5 x 4.0	30x15, 30x20, 30x30	2,000	50	500
6517308	M8	13.5 x 5.0	30x15, 30x20, 30x30	2,700	50	500
6517310	M10	14.0 x 5.0	30x15, 30x20, 30x30	2,900	50	500



### Complementary

Walraven RapidRail® Stainless Steel Fixing Rail  
Walraven RapidRail® Stainless Steel Cantilever Arm

### Alternative

Walraven RapidRail® Stainless Steel Hammerfix