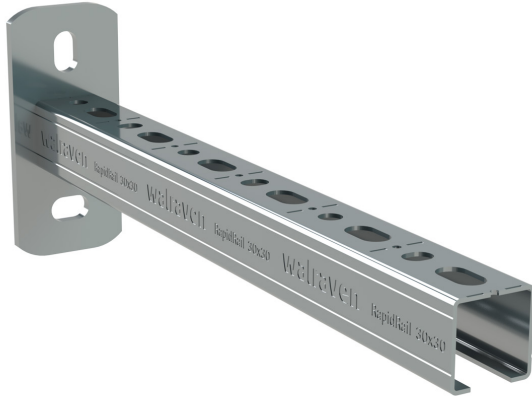


Walraven RapidRail® Cantilever Arm

(G 10 07)

fixing to wall, floor or ceiling

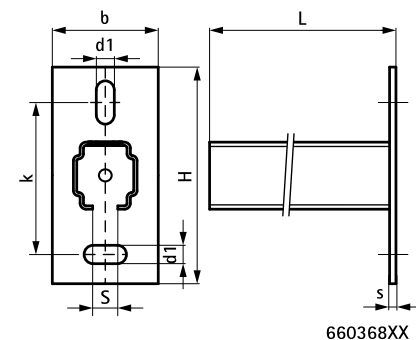
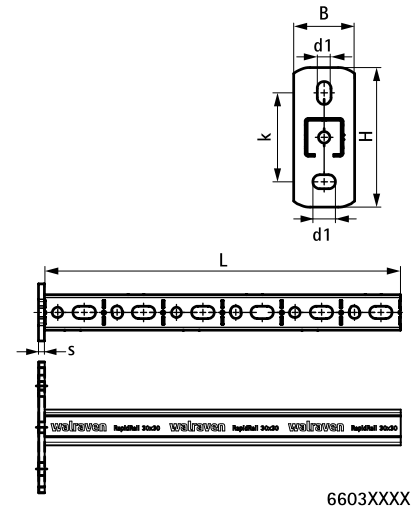


Features and Benefits

- base plate with welded C-profile
- for quick and adjustable fixing of one or multiple pipes
- CO₂ welded
- with continuous perforation
- with sawing marks each 50 mm
- unique hole pattern at type 30x20 and 38x40 allows to click in Walraven RapidRail® Hammerfix from both sides
- material: base plate made of steel 1.0332 (DD11)
- material: profiles type 27x18 and 30x20 made of steel 1.0330 (DC01)
- material: profiles type 30x15, 30x30 and 38x40 made of steel 1.0038 (S235JR)
- zinc plated
- type 38x40 is part of the Walraven BIS UltraProtect® 1000 system
- for more information about the max. allowed load ($F_{a,z}$) please refer to the loading tables or our online datasheet 'Technical Details Walraven RapidRail®'

Part No.	Type	L	B	H	s	d1	S	k	Pack 1
			(mm)	(mm)	(mm)	(mm)	(mm)	(mm)	
66031815	27x18	150 mm	38	110	4.0	16 x 11	15	70	20
66031820	27x18	200 mm	38	110	4.0	16 x 11	15	70	20
66031830	27x18	300 mm	38	110	4.0	16 x 11	15	70	20
66031850	27x18	500 mm	38	110	4.0	16 x 11	15	70	20
66031520	30x15	200 mm	38	110	4.0	16 x 11	15	70	20
66031530	30x15	300 mm	38	110	4.0	16 x 11	15	70	20
66032015	30x20	150 mm	38	110	4.0	16 x 11	15	70	20
66032020	30x20	200 mm	38	110	4.0	16 x 11	15	70	20
66032025	30x20	250 mm	38	110	4.0	16 x 11	15	70	20
66033020	30x30	200 mm	48	110	5.0	18 x 11	15	70	10
66033025	30x30	250 mm	48	110	5.0	18 x 11	15	70	10
66033030	30x30	300 mm	48	110	5.0	18 x 11	15	70	10
66033040	30x30	400 mm	48	110	5.0	18 x 11	15	70	20
66033050	30x30	500 mm	48	110	5.0	18 x 11	15	70	20
66036820	38x40	200 mm	48	130	5.0	25 x 11	15	90	10
66036825	38x40	250 mm	48	130	5.0	25 x 11	15	90	10
66036835	38x40	350 mm	48	130	5.0	25 x 11	15	90	10
66036840	38x40	400 mm	48	130	5.0	25 x 11	15	90	10
66036850	38x40	500 mm	48	130	5.0	25 x 11	15	90	10
66036860	38x40	600 mm	48	130	5.0	25 x 11	15	90	8
66036875	38x40	750 mm	48	130	5.0	25 x 11	15	90	8
66036805	38x40	1,050 mm	48	130	5.0	25 x 11	15	90	-

For more information about the max. allowed load ($F_{a,z}$) please refer to the loading tables or our online datasheet 'Technical Details Walraven RapidRail®'.



Complementary

Walraven Rail Prop
Walraven RapidRail® Slide Nut
Walraven Rail End Cap

Complementary

Walraven RapidRail® Hammerfix
Walraven Rubber Strip
BIS Expansion Device