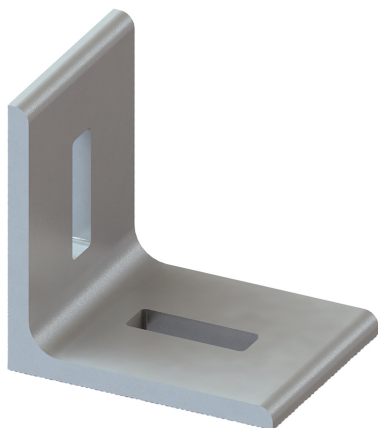


Walraven Maxx Profile Connector 90°

(H2 05 17)

to make Maxx rail fabrications



Features and Benefits

- 2-hole connector for Maxx profiles
- made of L-steel for extra stability
- material: steel S235JR
- hot dip galvanized
- packed per piece

Part No.	Model	Type	L	B	H	s	d1	F _{a,x} (N)	Pack 1
6681010	2 holes	AC80/90-2	100 mm	80 (mm)	100 (mm)	8.0 (mm)	45 x 14 (mm)	5,000*	-

* = When using the connector with 1 pc. Maxx Hammerfix (65219214)

