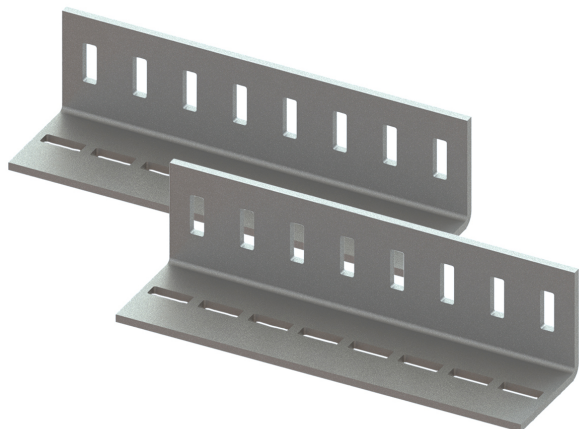


Walraven Maxx Linear Connector Set

(H2 05 31)

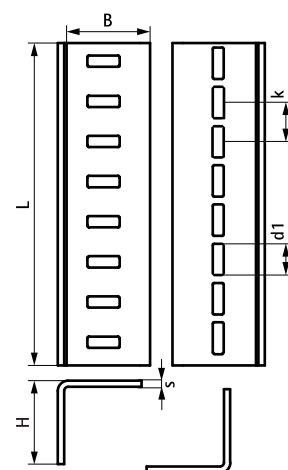
to make Maxx rail fabrications



Features and Benefits

- for linear connection of Maxx profiles type MX100 and MX120
- to be used in pairs
- delivery and assembly always in pairs (1 piece = set of 2)
- material: steel S235JR
- hot dip galvanized

| Part No. | Type | L | B (mm) | H (mm) | s (mm) | d1 (mm) | k (mm) | Pack 1 |
|----------|-----------|--------|-----------|-----------|-----------|------------|-----------|--------|
| 6589300 | LC100/120 | 405 mm | 102 | 102 | 8 | 40 x 14 | 50 | - |



Complementary

Walraven Maxx Heavy Rail Profile
Walraven Maxx Hammerfix