

Walraven Heavy Duty Clamp HD500 (BUP1000)

(B 10 09)

for steel pipes 15 - 564 mm

G¹/₂"

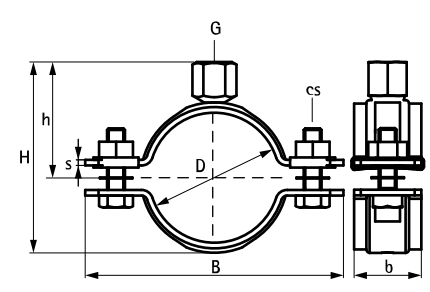


Features and Benefits

- two-part clamp with two locking bolts
- up to and including 5": locking nut is captive, hidden in plastic holder
- heavy design
- bolts secured with anti-loss washer
- with CO₂ welded connection nut
- material: steel
- surface protection:
 - product is part of the Walraven BIS UltraProtect[®] 1000 system
- surface protection:
 - suitable for in- and outdoor applications
 - stands min. 1,000 hours salt spray test (max. 5% red rust) according to ISO 9227
 - tested for fire safety



Part No.	D (mm)	D (")	DN	G	B (mm)	H (mm)	h (mm)	b x s (mm)	cs	F _{a,z} (N)	RAL	Pack 1
33078019	15 - 19	3/8	10	G ¹ / ₂ "	75	43	29	30 x 2.5	M8	2,100	RAL ²	25
33078023	19 - 23	1/2	15	G ¹ / ₂ "	78	47	31	30 x 2.5	M8	2,100	RAL ²	25
33078030	25 - 30	3/4	20	G ¹ / ₂ "	84	54	35	30 x 2.5	M8	2,100	RAL ²	25
33078036	31 - 36	1	25	G ¹ / ₂ "	91	60	38	30 x 2.5	M8	2,100	RAL ²	25
33078042	37 - 42	-	-	G ¹ / ₂ "	98	66	40	30 x 2.5	M8	2,100	RAL ²	25
33078045	40 - 45	1 1/4	32	G ¹ / ₂ "	101	69	42	30 x 2.5	M8	2,100	RAL ²	25
33078052	47 - 52	1 1/2	40	G ¹ / ₂ "	109	76	46	30 x 2.5	M8	2,100	RAL ²	25
33078058	53 - 58	-	-	G ¹ / ₂ "	115	82	48	30 x 2.5	M8	2,100	RAL ²	25
33078065	59 - 65	2	50	G ¹ / ₂ "	122	89	52	30 x 2.5	M8	2,100	RAL ²	25
33078071	66 - 71	-	-	G ¹ / ₂ "	129	95	55	30 x 2.5	M8	2,100	RAL ²	25
33078078	72 - 78	2 1/2	65	G ¹ / ₂ "	136	103	59	30 x 3.0	M8	4,000	RAL ²	25
33078085	79 - 85	-	-	G ¹ / ₂ "	144	110	63	30 x 3.0	M8	4,000	RAL ²	25
33078092	86 - 92	3	80	G ¹ / ₂ "	152	117	66	30 x 3.0	M8	4,000	RAL ²	25
33078106	98 - 106	-	-	G ¹ / ₂ "	165	131	73	30 x 3.0	M8	4,000	RAL ²	25
33078116	108 - 116	4	100	G ¹ / ₂ "	175	141	78	30 x 3.0	M8	4,000	RAL ²	25
33078133	125 - 133	-	-	G ¹ / ₂ "	193	158	87	30 x 3.0	M8	4,000	RAL ²	25
33078140	132 - 140	5	125	G ¹ / ₂ "	200	165	90	30 x 3.0	M8	4,000	RAL ²	25
33078154	148 - 154	-	-	G ¹ / ₂ "	215	179	97	30 x 3.0	M8	4,000	RAL ²	15
33078169	159 - 169	6	150	G ¹ / ₂ "	240	195	105	38 x 4.0	M10	8,200	RAL ²	15
33078183	173 - 183	-	-	G ¹ / ₂ "	254	209	112	38 x 4.0	M10	8,200	RAL ²	15
33078202	192 - 202	-	-	G ¹ / ₂ "	274	228	122	38 x 4.0	M10	8,200	RAL ²	15
33078219	208 - 219	-	-	G ¹ / ₂ "	290	244	130	38 x 4.0	M10	8,200	RAL ²	15
33078227	217 - 227	8	200	G ¹ / ₂ "	299	253	134	38 x 4.0	M10	8,200	RAL ²	2
33078254	244 - 254	-	-	G ¹ / ₂ "	335	280	148	38 x 4.0	M12	8,200	RAL ¹	2
33078279	267 - 279	10	250	G ¹ / ₂ "	360	305	160	38 x 4.0	M12	8,200	RAL ¹	2
33078289	279 - 289	-	-	G ¹ / ₂ "	367	314	165	48 x 5.0	M12	12,000	RAL ¹	2
33078325	315 - 325	12	300	G ¹ / ₂ "	403	348	183	48 x 5.0	M12	12,000	RAL ¹	2
33078360	350 - 360	-	-	G ¹ / ₂ "	439	385	200	48 x 5.0	M12	12,000	RAL ¹	2
33078408	398 - 408	16	400	G ¹ / ₂ "	487	433	224	48 x 5.0	M12	12,000	RAL ¹	2
33078436	424 - 436	-	-	G ¹ / ₂ "	515	461	238	48 x 5.0	M12	12,000	RAL ¹	2
33078458	448 - 458	18	450	G ¹ / ₂ "	537	483	249	48 x 5.0	M12	12,000	RAL ¹	2
33078509	499 - 509	20	500	G ¹ / ₂ "	588	534	275	48 x 5.0	M12	12,000	RAL ¹	2
33078564	554 - 564	-	-	G ¹ / ₂ "	643	589	302	48 x 5.0	M12	12,000	RAL ¹	2



RAL¹ = tested, certified and monitored by a third party according to RAL-GZ 655/B.
 RAL² = tested, certified and monitored by a third party according to RAL-GZ 655/B and RAL-GZ 656.
 For detailed technical information about our RAL marked products, please see the RAL datasheet in our web catalogue.

Complementary
 Walraven RapidStrut[®] Fixing System
 Walraven Fixing Accessories
 Walraven Fastenings

Complementary
 BIS Silicone Profile
 Walraven Threaded Tube

Alternative
 BIS Heavy Duty Clamp HD1501 (BUP1000)

Walraven Heavy Duty Clamp HD500 (BUP1000)

(B 10 09)

for steel pipes 15 - 564 mm

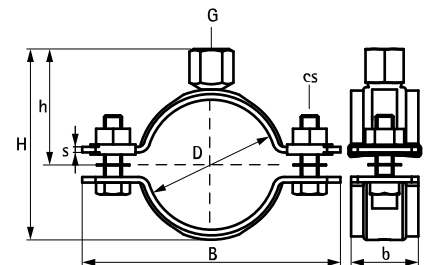
G1/2"



RAL-GZ 655/B
Cert.Nr. 2011-13a



RAL-GZ 656
Cert.Nr. 2011-05



Complementary

- Walraven RapidStrut® Fixing System
- Walraven Fixing Accessories
- Walraven Fastenings

Complementary

- BIS Silicone Profile
- Walraven Threaded Tube

Alternative

- BIS Heavy Duty Clamp HD1501 (BUP1000)