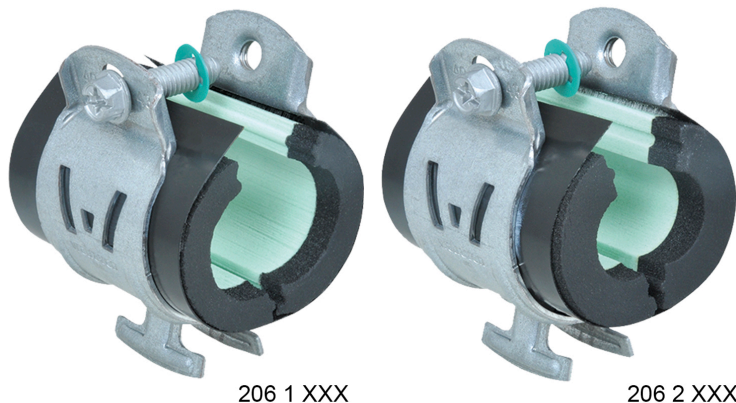


## W6000 Insulated Clamp

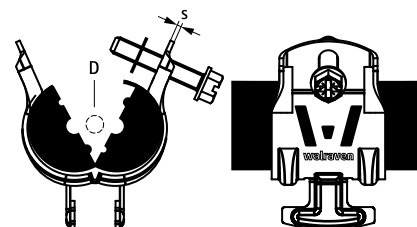
(H 32 220)

to be used with pipes that need to be insulated 6 - 43 mm



### Features and Benefits

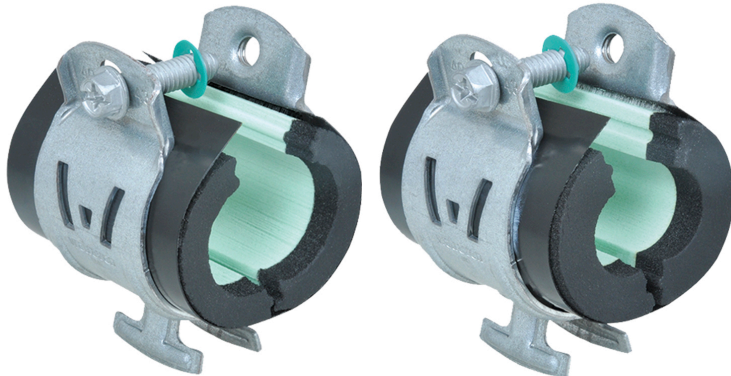
- for installation of thermal isolated steel, copper, stainless steel or plastic pipe
- one-piece design - no loose parts
- easier, faster, safer - installs with one hand
- 3-way screw head - Phillips, flat and hex
- available with 3/8" or 1/2" integrated thermal insulation block
- to be used in combination with soft insulation material
- vapour-proof gluing to pipe insulation
- excellent thermal and mechanical properties
- W Series Clamps are boxed for easy handling - no more bags
- material: Clamp: made of steel 1.0242; Insulation shell: PIR thermally hardening foam (core), synthetic rubber (sides) and vapor-proof layer of black PVC
- surface treatment: high grade Zn-Mg based coating (600 hours salt spray)



# W6000 Insulated Clamp

(H 32 220)

to be used with pipes that need to be insulated 6 - 43 mm



206 1 XXX

206 2 XXX

2063035	32 - 35	1-1/4	1-3/8	3/4" thermal insulation block	700	159	25
---------	---------	-------	-------	-------------------------------	-----	-----	----

