

Stainless Steel Heavy Duty Clamp with Lining

(M 11 05)

72 - 325 mm

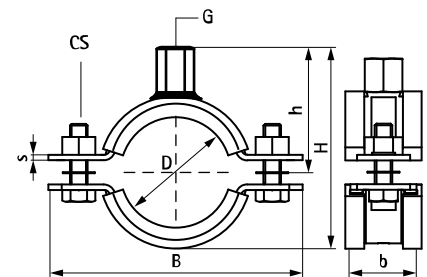
M12 - M16



Features and Benefits

- two-part clamp with two locking bolts
- heavy design
- with CO₂ welded connection nut
- material: stainless steel 1.4401 (A4) - EN 10088, AISI 316
- noise insulating lining, EPDM rubber, black
- also available on request: sound insulating lining of silicone rubber (reddish brown), heat resistant up to +200 °C (A 35 15)
- with sound insulating lining (acc. DIN 4109), age resistant, for temperatures -30 °C up to +110 °C

Part No.	D (mm)	D (")	DN	G	B (mm)	H (mm)	h (mm)	b x s (mm)	cs	F _{a,z} (N)	Pack 1
33177078	72 - 78	2 1/2	65	M12	141	111	66	25 x 3.0	M10 x 30 mm	1,900	5
33177085	79 - 85	-	-	M12	148	118	69	25 x 3.0	M10 x 30 mm	1,900	5
33177092	86 - 92	3	80	M12	155	125	77	25 x 3.0	M10 x 30 mm	1,900	5
33177109	101 - 109	-	-	M12	184	144	82	30 x 4.0	M10 x 40 mm	2,400	5
33177116	108 - 116	4	100	M12	191	151	85	30 x 4.0	M10 x 40 mm	2,400	5
33177133	125 - 133	-	-	M12	208	168	94	30 x 4.0	M10 x 40 mm	2,400	5
33177140	132 - 140	5	125	M12	217	177	99	30 x 4.0	M10 x 40 mm	2,400	5
33177169	159 - 169	6	150	M12	271	211	116	40 x 4.0	M12 x 50 mm	3,800	5
33177188	178 - 188	-	-	M12	290	230	125	40 x 4.0	M12 x 50 mm	3,800	5
33177204	194 - 204	-	-	M12	307	247	134	40 x 4.0	M12 x 50 mm	3,800	5
33177213	203 - 213	-	-	M12	315	255	138	40 x 4.0	M12 x 50 mm	3,800	5
33177227	217 - 227	8	200	M12	329	269	145	40 x 4.0	M12 x 50 mm	3,800	5
33177250	240 - 250	-	-	M16	352	298	161	40 x 4.0	M12 x 50 mm	3,800	5
33177275	265 - 275	10	250	M16	377	323	174	40 x 4.0	M12 x 50 mm	3,800	5
33177325	315 - 325	12	300	M16	429	375	200	40 x 4.0	M12 x 50 mm	3,800	5



Complementary

BIS Stainless Steel Fixpoint Console FPC 'Medium'
 BIS Stainless Steel Expansion Guide Assembly
 BIS Stainless Steel Threaded Rod

Complementary

BIS Stainless Steel Wall Plate Resistance Welded
 Walraven RapidStrut® Stainless Steel Channel
 Walraven RapidStrut® Stainless Steel