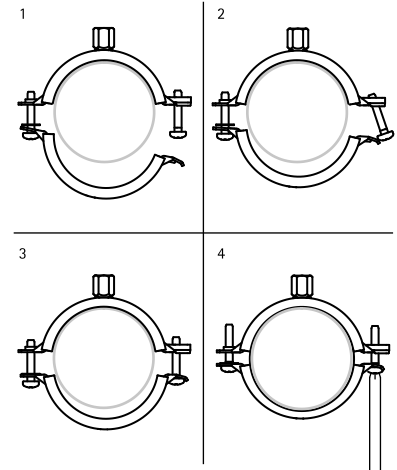


# Bifix® G2 with Lining (M8) (BUP1000)

(A 05 44)

for steel, copper, cast iron and plastic (multilayer) pipe 10 - 83 mm

M8



## Features and Benefits

- two-screw clamp
- quick closing mechanism for easy locking of the clamp with one hand
- 2 component rubber lining provides easy positioning of the pipe during installation
- when the clamp is closed, the pipe rests on soft black rubber lining for increased noise reduction
- suitable for steel, copper, cast iron and plastic (multilayer) pipe
- material: steel
- temperature resistance from -30 °C to +120 °C
- sound insulating lining according DIN 4109
- noise reduction according to ISO 3822-1 up to 23 dB(A)
- surface protection:
  - product is part of the Walraven BIS UltraProtect® 1000 system
  - suitable for in- and outdoor applications
  - stands min. 1,000 hours salt spray test (max. 5% red rust) according to ISO 9227

Part No.	D (mm)	D (°)	DN	G	B (mm)	H (mm)	h (mm)	b x s (mm)	cs	F <sub>a,z</sub> (N)	RAL	Pack 1
31185014	10 - 14	1/4	8	M8	59	34	21	20 x 1.25	M6	700	RAL <sup>1</sup>	50
31185019	15 - 19	3/8	10	M8	63	38	23	20 x 1.25	M6	700	RAL <sup>1</sup>	50
31185023	20 - 23	1/2	15	M8	68	43	25	20 x 1.25	M6	700	RAL <sup>1</sup>	50
31185028	25 - 28	3/4	20	M8	74	49	28	20 x 1.25	M6	700	RAL <sup>1</sup>	50
31185035	31 - 35	1	25	M8	80	55	31	20 x 1.25	M6	700	RAL <sup>1</sup>	50
31185039	36 - 39	-	-	M8	84	59	33	20 x 1.25	M6	700	RAL <sup>1</sup>	50
31185045	40 - 45	1 1/4	32	M8	91	66	37	20 x 1.25	M6	700	RAL <sup>1</sup>	50
31185052	48 - 52	1 1/2	40	M8	97	72	40	20 x 1.25	M6	700	RAL <sup>1</sup>	50
31185058	54 - 58	-	-	M8	104	79	43	20 x 1.25	M6	700	RAL <sup>1</sup>	50
31185064	60 - 64	2	50	M8	109	84	46	20 x 1.25	M6	700	RAL <sup>1</sup>	50
31185070	66 - 70	-	-	M8	118	92	50	20 x 1.50	M6	800	RAL <sup>1</sup>	50
31185079	75 - 79	2 1/2	65	M8	125	100	54	20 x 1.50	M6	800	RAL <sup>1</sup>	50
31185083	80 - 83	-	-	M8	131	106	57	20 x 1.50	M6	800	RAL <sup>1</sup>	50

