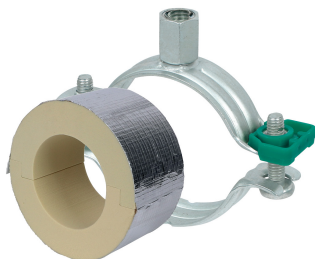


BISOFIX® PIR40 + Bifix® G2

(D 03 74)

for insulated pipes 12.0 - 139.7 mm



Features and Benefits

- for combination with rigid foam insulation
- cover joints with aluminium tape
- insulating pipe support with Bifix® G2 clamp
- Bifix® G2 with M8/M10 connection nut
- does not contain CFC, HCFC, formaldehyde or cadmium
- fire class B2
- PIR density for $D < 110\text{mm} = 80\text{kg/m}^3$
- PIR density for $D > 110\text{mm} = 120\text{kg/m}^3$
- thermal conductivity lambda (approx. value): 0.30 W/(mK)
- surface protection:
 - product is part of the Walraven BIS UltraProtect® 1000 system
 - suitable for in- and outdoor applications
 - stands min. 1,000 hours salt spray test (max. 5% red rust) according to ISO 9227
- temperature range $-45\text{ °C} - +105\text{ °C}$

Part No.	Consists Of	D (mm)	Model	F _{a,z} (N)	Pack 1
I403008012	I400000012 + 3008091	12.0	BISOFIX® PIR40 + Bifix® G2 Clamp	300	50
I403008015	I400000015 + 3008105	15.0 - 16.0	BISOFIX® PIR40 + Bifix® G2 Clamp	320	50
I403008018	I400000018 + 3008105	17.2 - 18.0	BISOFIX® PIR40 + Bifix® G2 Clamp	340	50
I403008022	I400000022 + 3008105	21.3 - 22.0	BISOFIX® PIR40 + Bifix® G2 Clamp	350	50
I403008028	I400000028 + 3008115	26.9 - 28.0	BISOFIX® PIR40 + Bifix® G2 Clamp	350	25
I403008034	I400000034 + 3008115	33.7 - 35.0	BISOFIX® PIR40 + Bifix® G2 Clamp	370	25
I403008042	I400000042 + 3008130	42.4	BISOFIX® PIR40 + Bifix® G2 Clamp	410	25
I403008048	I400000048 + 3008130	48.3	BISOFIX® PIR40 + Bifix® G2 Clamp	430	25
I403008054	I400000054 + 3008140	54.0	BISOFIX® PIR40 + Bifix® G2 Clamp	440	25
I403008057	I400000057 + 3008140	56.0 - 57.0	BISOFIX® PIR40 + Bifix® G2 Clamp	460	25
I403008060	I400000060 + 3008140	60.3	BISOFIX® PIR40 + Bifix® G2 Clamp	470	25
I403008064	I400000064 + 3008140	64.0	BISOFIX® PIR40 + Bifix® G2 Clamp	490	25
I403008070	I400000070 + 3008160	70.0	BISOFIX® PIR40 + Bifix® G2 Clamp	510	15
I403008076	I400000076 + 3008160	76.1	BISOFIX® PIR40 + Bifix® G2 Clamp	530	15
I403008089	I400000089 + 3008180	88.9	BISOFIX® PIR40 + Bifix® G2 Clamp	620	15
I403008102	I400000102 + 3008180	101.6	BISOFIX® PIR40 + Bifix® G2 Clamp	650	15
I403008108	I400000108 + 3008200	108.0	BISOFIX® PIR40 + Bifix® G2 Clamp	690	15
I403008114	I400000114 + 3008200	114.3	BISOFIX® PIR40 + Bifix® G2 Clamp	1,530	5
I403008133	I400000133 + 3008210	133.0	BISOFIX® PIR40 + Bifix® G2 Clamp	1,670	5
I403008140	I400000140 + 3008225	139.7	BISOFIX® PIR40 + Bifix® G2 Clamp	1,730	5