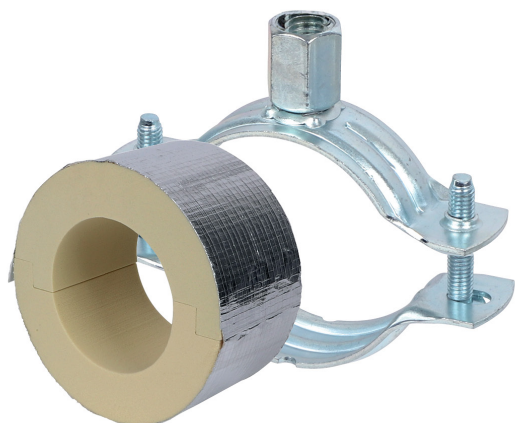


# BISOFIX<sup>®</sup> PIR40 + 2S

for insulated pipes 12.0 - 139.7 mm

(D 03 72)



## Features and Benefits

- for combination with rigid foam insulation
- cover joints with aluminium tape
- insulating pipe support with 2S clamp
- 2S clamp with M8/M10 connection nut
- does not contain CFC, HCFC, formaldehyde or cadmium
- fire class B2
- PIR density for D <110mm = 80kg/m<sup>3</sup>
- PIR density for D >110mm = 120kg/m<sup>3</sup>
- thermal conductivity lambda (approx. value): 0.30 W/(mK)
- clamp: zinc plated
- temperature range -45 °C - +105 °C

Part No.	D (mm)	Model	F <sub>a,z</sub> (N)	Pack 1
I403303012	12.0	BISOFIX <sup>®</sup> PIR40 + 2S Clamp	300	50
I403303015	15.0 - 16.0	BISOFIX <sup>®</sup> PIR40 + 2S Clamp	320	50
I403303018	17.2 - 18.0	BISOFIX <sup>®</sup> PIR40 + 2S Clamp	340	50
I403303022	21.3 - 22.0	BISOFIX <sup>®</sup> PIR40 + 2S Clamp	350	50
I403303028	26.9 - 28.0	BISOFIX <sup>®</sup> PIR40 + 2S Clamp	350	25
I403303034	33.7 - 35.0	BISOFIX <sup>®</sup> PIR40 + 2S Clamp	370	25
I403303042	42.4	BISOFIX <sup>®</sup> PIR40 + 2S Clamp	410	25
I403303048	48.3	BISOFIX <sup>®</sup> PIR40 + 2S Clamp	430	25
I403303054	54.0	BISOFIX <sup>®</sup> PIR40 + 2S Clamp	440	25
I403303057	56.0 - 57.0	BISOFIX <sup>®</sup> PIR40 + 2S Clamp	460	25
I403303060	60.3	BISOFIX <sup>®</sup> PIR40 + 2S Clamp	470	25
I403303064	64.0	BISOFIX <sup>®</sup> PIR40 + 2S Clamp	490	25
I403303070	70.0	BISOFIX <sup>®</sup> PIR40 + 2S Clamp	510	15
I403303076	76.1	BISOFIX <sup>®</sup> PIR40 + 2S Clamp	530	15
I403303089	88.9	BISOFIX <sup>®</sup> PIR40 + 2S Clamp	620	15
I403303102	101.6	BISOFIX <sup>®</sup> PIR40 + 2S Clamp	650	15
I403303108	108.0	BISOFIX <sup>®</sup> PIR40 + 2S Clamp	690	15
I403303114	114.3	BISOFIX <sup>®</sup> PIR40 + 2S Clamp	1,530	5
I403303133	133.0	BISOFIX <sup>®</sup> PIR40 + 2S Clamp	1,670	5
I403303140	139.7	BISOFIX <sup>®</sup> PIR40 + 2S Clamp	1,730	5