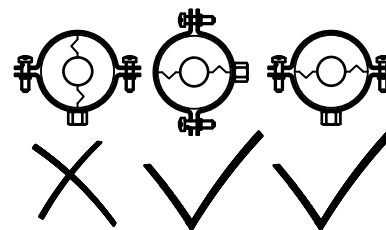
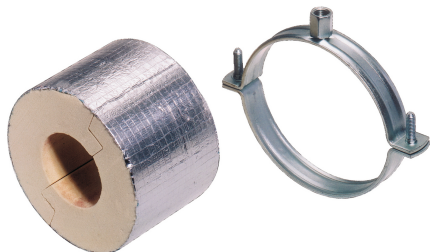


## BISOFIX® PIR30

(D 05 20)

for insulated pipes 15.0 - 323.9 mm

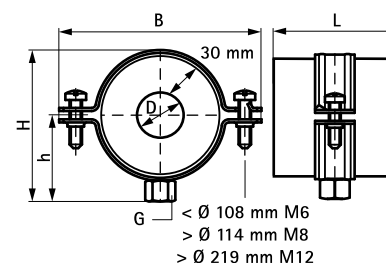
M8/10 - M10/12 - M16



### Features and Benefits

- insulation shell (thickness 30 mm) with pipe clamp BIS 2S
- for fixing of thermal isolated pipe of steel, copper or stainless steel
- to be used in combination with hard insulation material
- a vapour sealed connection with pipe insulation can easily be made by use of aluminium tape
- when installing the pipe support, always align the contact areas of the insulation shells horizontally (to prevent tensile and pressure forces)
- working temperature from -180 °C to +140 °C
- size and specific weight are tuned to pipe weight
- from pipe Ø 273 mm pipe support needed
- material: clamp of steel; insulation shell made of PIR thermally hardening foam with a moisture proof outer covering of glass-fibre reinforced aluminium foil
- does not contain CFC, HCFC, formaldehyde or cadmium
- excellent thermal and mechanical properties
- clamp: zinc plated

Part No.	D (mm)	D (°)	DN	G	L	B (mm)	H (mm)	h (mm)	F <sub>a,z</sub> (N)	Pack 1
2213015	15.0 - 16.0	-	-	M8/10	75 mm	109	99	56	170	12
2213017	17.2 - 18.0	3/8	10	M8/10	75 mm	109	99	57	190	12
2213021	21.3 - 22.0	1/2	15	M8/10	75 mm	117	102	59	230	12
2213027	26.9 - 28.0	3/4	20	M8/10	75 mm	123	108	61	300	12
2213033	33.7 - 35.0	1	25	M8/10	75 mm	129	113	64	320	12
2213042	42.4	1 1/4	32	M8/10	75 mm	138	123	69	350	12
2213048	48.3	1 1/2	40	M8/10	75 mm	144	128	72	370	12
2213054	54.0	-	-	M8/10	75 mm	153	138	77	380	12
2213057	56.0 - 57.0	-	-	M8/10	75 mm	153	138	77	390	12
2213060	60.3	2	50	M8/10	75 mm	160	144	80	410	12
2213064	63.5 - 64.0	-	-	M8/10	75 mm	160	144	80	420	12
2213076	76.1	2 1/2	65	M8/10	75 mm	178	163	89	460	24
2213089	88.9	3	80	M8/10	75 mm	187	171	93	500	24
2213108	108.0	-	-	M8/10	75 mm	204	197	102	620	18
2213114	114.3	4	100	M8/10	100 mm	233	200	108	1,370	8
2213133	133.0	-	-	M8/10	100 mm	256	223	119	1,520	8
2213140	139.7	5	125	M8/10	100 mm	256	223	119	1,570	8
2213159	159.0	-	-	M8/10	100 mm	273	242	128	1,720	8
2213168	168.3	6	150	M10/12	100 mm	303	248	129	2,720	8
2213219	219.1	8	200	M16	150 mm	358	306	160	4,210	6
2213273	273.1	10	250	M16	150 mm	421	352	181	5,020	6
2213324	323.9	12	300	M16	150 mm	465	410	212	5,790	6



### Complementary

- BIS RapidRail® Fixing System
- BIS Fixing Accessories
- BIS Fastenings