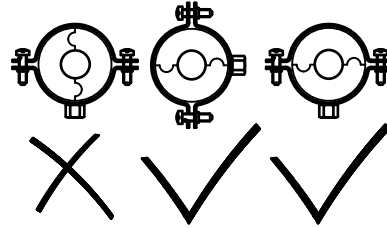
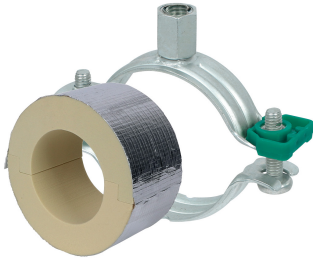


BISOFIX[®] PIR30 + Bifix[®] G2

(D 03 64)

for insulated pipes 12.0 - 160.0 mm



Features and Benefits

- for combination with rigid foam insulation
- cover joints with aluminium tape
- insulating pipe support with Bifix[®] G2 clamp
- Bifix[®] G2 with M8/M10 connection nut
- does not contain CFC, HCFC, formaldehyde or cadmium
- fire class B2
- PIR density for D <110mm = 80kg/m³
- PIR density for D >110mm = 120kg/m³
- thermal conductivity lambda (approx. value): 0.30 W/(mK)
- surface protection:
 - product is part of the Walraven BIS UltraProtect[®] 1000 system
 - suitable for in- and outdoor applications
 - stands min. 1,000 hours salt spray test (max. 5% red rust) according to ISO 9227
- temperature range -45 °C - +105 °C

Part No.	Consists Of	D (mm)	Model	F _{a,z} (N)	Pack 1
I303008012	I300000012 + 3008070	12.0	BISOFIX [®] PIR30 + Bifix [®] G2 Clamp	130	50
I303008015	I300000015 + 3008079	15.0 - 16.0	BISOFIX [®] PIR30 + Bifix [®] G2 Clamp	170	50
I303008018	I300000018 + 3008079	17.2 - 18.0	BISOFIX [®] PIR30 + Bifix [®] G2 Clamp	190	50
I303008022	I300000022 + 3008083	21.3 - 22.0	BISOFIX [®] PIR30 + Bifix [®] G2 Clamp	230	50
I303008028	I300000028 + 3008091	26.9 - 28.0	BISOFIX [®] PIR30 + Bifix [®] G2 Clamp	300	50
I303008034	I300000034 + 3008091	33.7 - 35.0	BISOFIX [®] PIR30 + Bifix [®] G2 Clamp	320	50
I303008042	I300000042 + 3008105	42.4	BISOFIX [®] PIR30 + Bifix [®] G2 Clamp	350	50
I303008048	I300000048 + 3008115	48.3	BISOFIX [®] PIR30 + Bifix [®] G2 Clamp	370	25
I303008054	I300000054 + 3008115	54.0	BISOFIX [®] PIR30 + Bifix [®] G2 Clamp	380	25
I303008057	I300000057 + 3008115	56.0 - 57.0	BISOFIX [®] PIR30 + Bifix [®] G2 Clamp	390	25
I303008060	I300000060 + 3008130	60.3	BISOFIX [®] PIR30 + Bifix [®] G2 Clamp	410	25
I303008064	I300000064 + 3008130	64.0	BISOFIX [®] PIR30 + Bifix [®] G2 Clamp	420	25
I303008070	I300000070 + 3008130	70.0	BISOFIX [®] PIR30 + Bifix [®] G2 Clamp	440	25
I303008076	I300000076 + 3008140	76.1	BISOFIX [®] PIR30 + Bifix [®] G2 Clamp	460	25
I303008089	I300000089 + 3008160	88.9	BISOFIX [®] PIR30 + Bifix [®] G2 Clamp	500	15
I303008102	I300000102 + 3008160	101.6	BISOFIX [®] PIR30 + Bifix [®] G2 Clamp	550	15
I303008108	I300000108 + 3008169	108.0	BISOFIX [®] PIR30 + Bifix [®] G2 Clamp	620	15
I303008114	I300000114 + 3008180	114.3	BISOFIX [®] PIR30 + Bifix [®] G2 Clamp	1,370	15
I303008133	I300000133 + 3008200	133.0	BISOFIX [®] PIR30 + Bifix [®] G2 Clamp	1,520	5
I303008140	I300000140 + 3008200	139.7	BISOFIX [®] PIR30 + Bifix [®] G2 Clamp	1,570	5
I303008160	I300000160 + 3008225	159.0 - 160.0	BISOFIX [®] PIR30 + Bifix [®] G2 Clamp	1,720	5