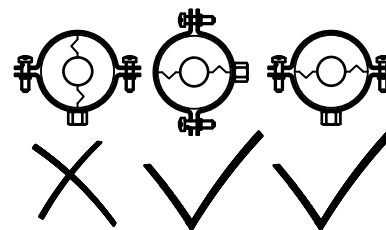
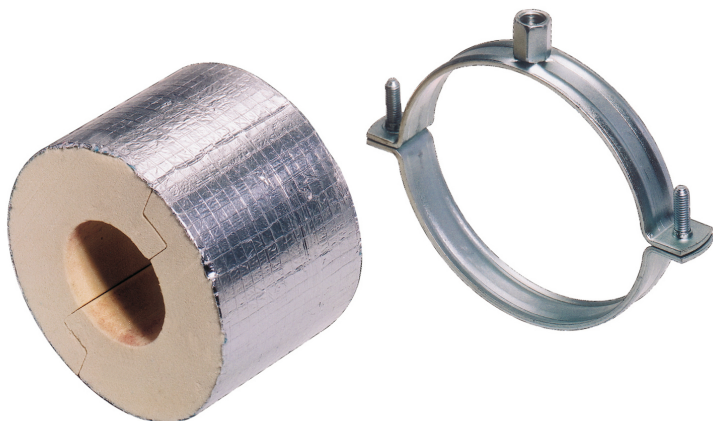


## BISOFIX® PIR20

for insulated pipes 15.0 - 139.7 mm

M8/10

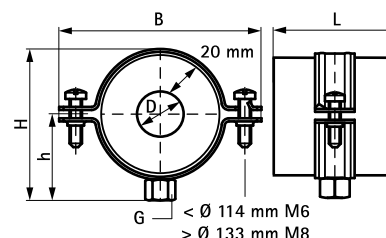
(D 05 15)



### Features and Benefits

- insulation shell (thickness 20 mm) with pipe clamp BIS 2S
- for fixing of thermal isolated pipe of steel, copper or stainless steel
- to be used in combination with hard insulation material
- a vapour sealed connection with pipe insulation can easily be made by use of aluminium tape
- when installing the pipe support, always align the contact areas of the insulation shells horizontally (to prevent tensile and pressure forces)
- working temperature from -180 °C to +140 °C
- size and specific weight are tuned to pipe weight
- material: clamp of steel; insulation shell made of PIR thermally hardening foam with a moisture proof outer covering of glass-fibre reinforced aluminium foil
- does not contain CFC, HCFC, formaldehyde or cadmium
- excellent thermal and mechanical properties
- clamp: zinc plated

Part No.	D (mm)	D (°)	DN	G	L	B (mm)	H (mm)	h (mm)	F <sub>a,z</sub> (N)	Pack 1
2212015	15.0 - 16.0	-	-	M8/10	75 mm	92	76	46	160	12
2212017	17.2 - 18.0	3/8	10	M8/10	75 mm	92	76	46	170	12
2212021	21.3 - 22.0	1/2	15	M8/10	75 mm	91	81	48	180	12
2212027	26.9 - 28.0	3/4	20	M8/10	75 mm	102	91	53	200	12
2212033	33.7 - 35.0	1	25	M8/10	75 mm	109	98	57	220	12
2212042	42.0	1 1/4	32	M8/10	75 mm	117	104	60	280	12
2212048	48.3	1 1/2	40	M8/10	75 mm	123	112	63	300	12
2212054	54.0	1 1/2	-	M8/10	75 mm	129	113	64	320	12
2212057	56.0 - 57.0	-	-	M8/10	75 mm	129	117	66	330	12
2212060	60.3	2	50	M8/10	75 mm	138	123	69	340	12
2212064	63.5 - 64.0	-	-	M8/10	75 mm	138	125	70	350	12
2212070	70.0	-	-	M8/10	75 mm	144	132	74	370	12
2212076	76.1	2 1/2	65	M8/10	75 mm	153	138	77	390	12
2212089	88.9	3	80	M8/10	75 mm	169	153	84	430	24
2212108	108.0	-	-	M8/10	75 mm	187	171	93	500	24
2212114	114.3	4	100	M8/10	100 mm	191	175	95	1,110	18
2212133	133.0	-	-	M8/10	100 mm	233	200	108	1,360	8
2212140	139.7	5	125	M8/10	100 mm	233	204	110	1,410	8



**Complementary**  
 BIS RapidRail® Fixing System  
 BIS Fixing Accessories  
 BIS Fastenings