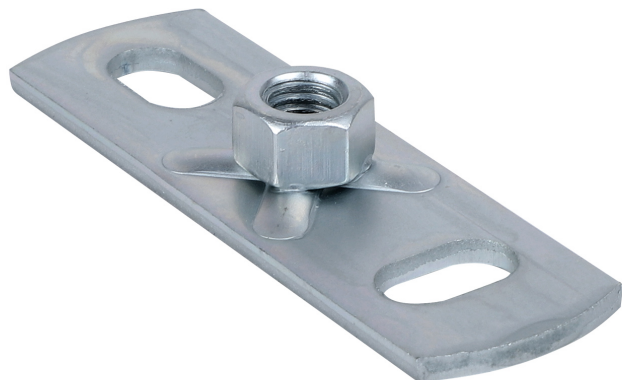


# BIS Wall Plate Resistance Welded (BUP1000)

(K 15 11)

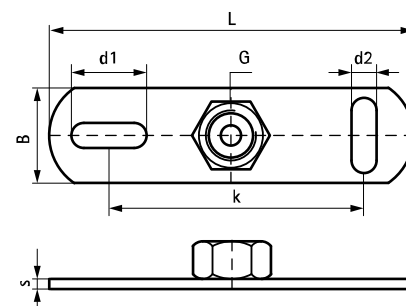
fixing to wall or ceiling



## Features and Benefits

- slots at 90° to each other to simplify fixing
- with resistance welded connection nut
- material: steel
- surface protection:
  - product is part of the BIS UltraProtect® 1000 system
  - suitable for in- and outdoor applications
  - stands min. 1,000 hours salt spray test (max. 5% red rust) according to ISO 9227

Part No.	G	L	B (mm)	s (mm)	d1 (mm)	d2 (mm)	k (mm)	F <sub>a,z</sub> (N)	Pack 1
6708008	M8	80 mm	25	3	15 x 8.5	15 x 8.5	50	2,500	50
6708010	M10	80 mm	25	3	15 x 8.5	15 x 8.5	50	2,500	50



**Complementary**  
BIS Stud Bolt (BUP1000)