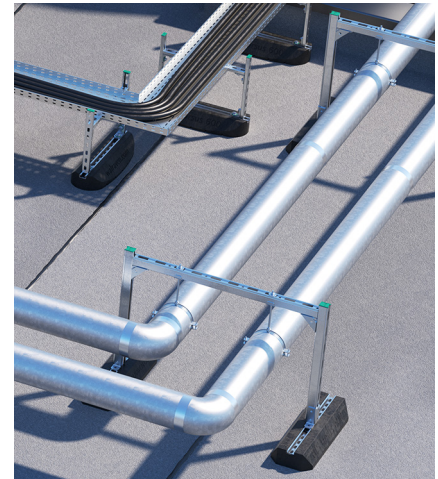


BIS Ursus Foot Support System (BUP1000)

(1 04 20)

for Rooftop Installations



Features and Benefits

- for supporting small pipework systems, ductwork runs and cable trays
- to support climate installations, walkways on flat roofs, etc.
- does not penetrate the waterproof membrane
- material: vulcanized rubber, black; Strut Rail made of steel 1.0242
- UV resistant
- Strut Rail: surface protection:
 - product is part of the BIS UltraProtect® 1000 system
 - suitable for in- and outdoor applications
 - stands min. 1,000 hours salt spray test (max. 5% red rust) according to ISO 9227

| Part No. | Model | L | B (mm) | H (mm) | F _{a,z} (N) | Pack 1 |
|----------|----------------------------|--------|-----------|-----------|-------------------------|--------|
| 67687250 | Horizontal, including rail | 250 mm | 130 | 50 | 1,000 | 1 |
| 67687400 | Horizontal, including rail | 400 mm | 130 | 50 | 2,000 | 1 |
| 67687601 | Horizontal, including rail | 600 mm | 200 | 50 | 3,000 | 1 |

For a detailed calculation and for support how to spread the load please contact Walraven Technical Support.

In cases where a foot is used in roof applications, the installer is obliged to verify maximum load capacity of roof before installation.

