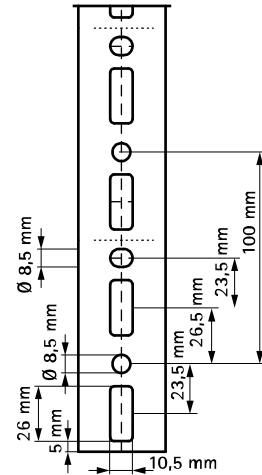
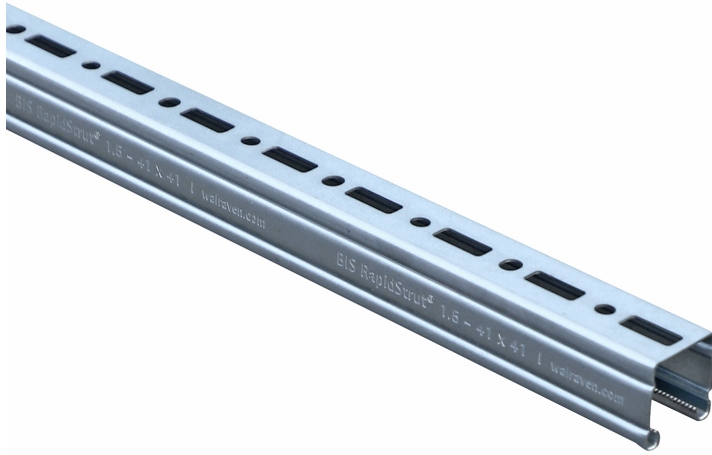


# BIS RapidStrut® Fixing Rail with Anchor Holes (pg)

(H 04 17)

suspension and support

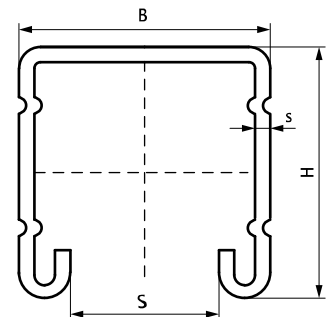


## Features and Benefits

- universal rail system
- with continuous perforation
- distance between rail end and first hole is always equal
- a continuous graduated centimetre scale on one side
- inward formed flanges with serrated profile for extra grip
- material: steel 1.0242
- for more information about the max. allowed load ( $F_{a,z}$ ) please refer to the loading tables or our online datasheet 'Walraven RapidStrut® Data Sheet'

| Part No.   | Model      | L     | B    | H    | s    | S    | BndS | BndL | App. |
|------------|------------|-------|------|------|------|------|------|------|------|
|            |            |       | (mm) | (mm) | (mm) | (mm) |      |      |      |
| 65059224   | Perforated | 2 m   | 41   | 21   | 1.50 | 22   | 20   | 200  | m.   |
| 65059324   | Perforated | 3 m   | 41   | 21   | 1.50 | 22   | 30   | 300  | m.   |
| 65059624   | Perforated | 6 m   | 41   | 21   | 1.50 | 22   | 60   | 600  | m.   |
| 65059244   | Perforated | 2 m   | 41   | 41   | 1.50 | 22   | 20   | 100  | m.   |
| 65059344   | Perforated | 3 m   | 41   | 41   | 1.50 | 22   | 30   | 150  | m.   |
| 65059644   | Perforated | 6 m   | 41   | 41   | 1.50 | 22   | 60   | 300  | m.   |
| 6505944050 | Perforated | 0.5 m | 41   | 41   | 1.50 | 22   | -    | -    | pc.  |
| 6505944100 | Perforated | 1 m   | 41   | 41   | 1.50 | 22   | -    | -    | pc.  |

For more information about the max. allowed load ( $F_{a,z}$ ) please refer to the loading tables or our online datasheet 'Walraven RapidStrut® Data Sheet'.



### Complementary

- BIS RapidStrut® Hammerfix G2 (BUP1000)
- BIS RapidStrut® Slide Nut G2 (BUP1000)
- BIS Strut Clamp with Lining

### Complementary

- BIS Strut Slide Nut (BUP1000)

### Alternative

- Walraven RapidStrut® Fixing Rail DS 5 (BUP1000)