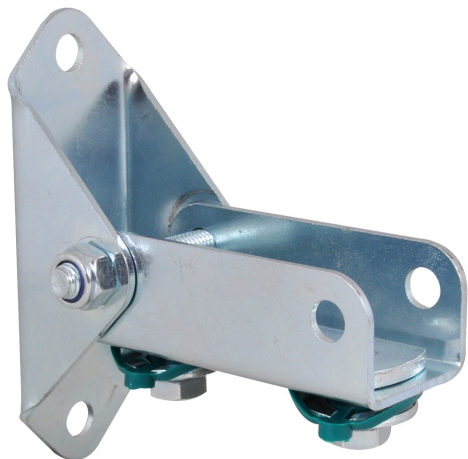


BIS RapidRail® Wall Plate (Hinged)

(G 15 10)

fixing to wall



Features and Benefits

- wall plate with hinging U-profile
- also used to strengthen rail constructions
- for fixing of rail to sloping walls
- Part No. 6613250: suitable for WM1, 15, 2, 30
- material: steel
- zinc plated

Part No.	T _(max.) (Nm)	For Rail	Pack 1
6613250	15.0	WM1 - 30	20

