

BIS Pipe Saddle hdg

for steel pipes 21.5 - 60.3 mm

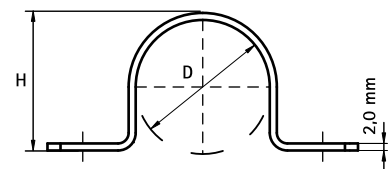
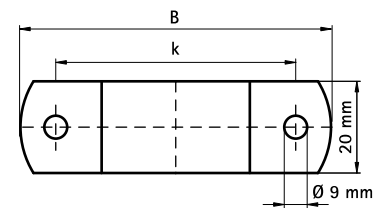
(B 30 10)



Features and Benefits

- one-part saddle
- hot dip galvanized
- material: steel

| Part No. | D (mm) | D (") | DN | B (mm) | H (mm) | k (mm) | F _{a,z} (N) | Pack 1 |
|----------|-----------|----------|----|-----------|-----------|-----------|-------------------------|--------|
| 4601021 | 21.5 | 1/2 | 15 | 70 | 23 | 50 | 3,500 | 50 |
| 4601027 | 26.9 | 3/4 | 20 | 78 | 28 | 58 | 3,500 | 50 |
| 4601033 | 33.7 | 1 | 25 | 82 | 34 | 62 | 3,500 | 50 |
| 4601043 | 42.5 | 1 1/4 | 32 | 92 | 44 | 72 | 3,500 | 50 |
| 4601048 | 48.0 | 1 1/2 | 40 | 97 | 47 | 77 | 3,500 | 50 |
| 4601061 | 60.3 | 2 | 50 | 108 | 58 | 88 | 3,500 | 50 |



Complementary
BIS Fastenings

Alternative
BIS Industrial Saddle