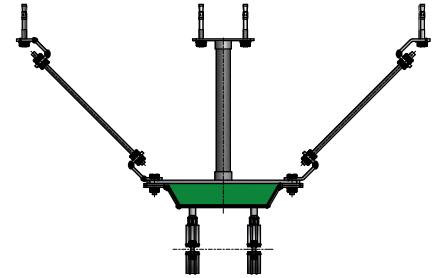


BIS dB-FiX[®] 80 / 200 Support Plate

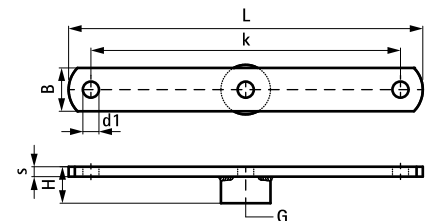
(E 05 47)



Features and benefits

- for mounting a BIS dB-FiX[®] fixing point at a distance from a wall or ceiling
- to be used in combination with BIS Wall Plate CO₂ welded (Part No: 671 9 033)
- axial support by threaded rods in combination with BIS Adjustable Support (BUP1000)(Part No. 6658 8 818) or BIS Threaded Rod Support (Part No. 669 8 015)
- CO₂ welded
- material: steel 1.0332
- zinc plated

Part No.	G	L	B	H	s1	k	For	Pack 1
			(mm)	(mm)	(mm)	(mm)		
669 8 030	G1"	286 mm	35	38	8.0	250	BIS dB-FiX [®] 80	25
669 8 035	G1"	361 mm	35	38	8.0	325	BIS dB-FiX [®] 200	25



Complementary

BIS dB-FiX[®] 80 Fixing Point Assembly
 BIS dB-FiX[®] 200 Fixing Point Assembly
 BIS Wall Plate 671 and 675

Complementary

BIS Threaded Tube
 BIS Threaded Rod Support
 BIS Adjustable Support