

BIS Expansion Guide Assembly (BUP1000)

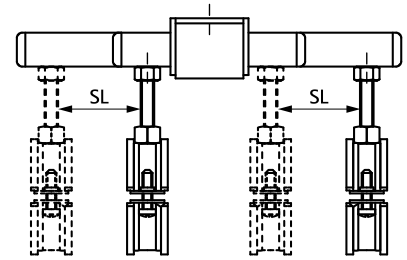
(E 10 40)

fixing with sliding assemblies



666 8 612

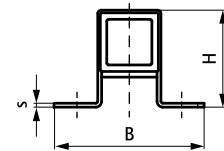
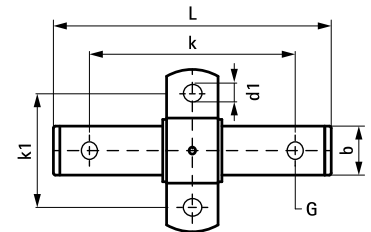
666 8 813



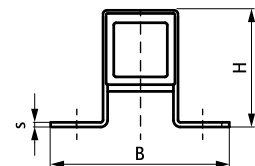
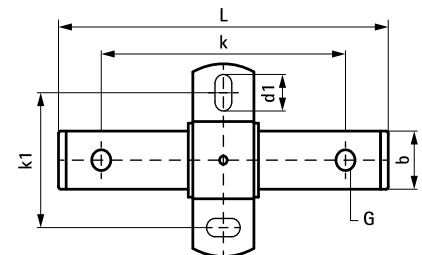
Features and benefits

- stable and safe double support for pipe expansion
- fix directly on the building structure or in combination with rail systems
- suitable for ceiling mounting (suspended) and floor mounting (standing mounted)
- tapped with different sized threads on opposing faces
- a variety of connection possibilities, can be combined with Bifix® G2 or HD1501 Pipe Clamps
- material: metal parts made of steel; plastic parts made of PE
- surface protection:
 - product is part of the Walraven BIS UltraProtect® 1000 system
 - suitable for in- and outdoor applications
 - stands min. 1,000 hours salt spray test (max. 5% red rust) according to ISO 9227

Part No.	Type	G	L	B	H	b	s	d1	k	k1	SL (max.)	F _{a,z} (N)	Pack 1
6668612	FG2	M10/12	170 mm	135 (mm)	46 (mm)	35 (mm)	3.0 (mm)	Ø 13 (mm)	120 (mm)	100 (mm)	60 (mm)	1,500 (N)	5
6668813	FG3	Ø 13.0 mm / 17.0 mm	255 mm	146 (mm)	90 (mm)	40 (mm)	5.0 (mm)	20 x 13 (mm)	200 (mm)	100 (mm)	120 (mm)	7,500 (N)	5



666 8 612



666 8 813

Complementary

Walraven Stud Bolt
Walraven Threaded Rod
WTB1 Throughbolt Anchor

Alternative

BIS Expansion Device (BUP1000)