

# WDI1L Drop-in Anchor Lipped

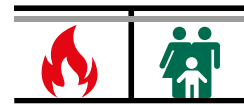
(L 03 10)

standard drop-in anchor with a lip collar



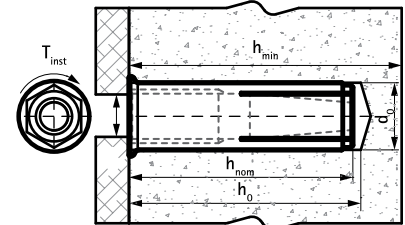
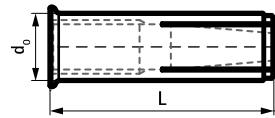
## Features and benefits

- simple and quick installation procedure
- zinc plated
- collar with a lip for flush anchor setting at any hole depth
- ETA ETAG001 Part 6 approval for multiple use for non-structural applications
- medium load capacity
- fire resistance class R30-R120 for design of anchorages under exposure to fire (M8-M16)
- material: steel
- substrate type:
  - cracked concrete
  - non-cracked concrete



Part No.	Code	Size	L	$d_0$	$h_0$	$h_{min}$	$h_{nom}$	Rec. Tension Load C20/25 Concrete (kN)	Pack 1	Pack 2
				(mm)	(mm)	(mm)	(mm)			
6103106	WDI1L 6x25	M6	25 mm	8	$\geq 30$	80	$\geq 25$	0.52*	100	600
6103108	WDI1L 8x30	M8	30 mm	10	$\geq 32$	80	$\geq 30$	1.02*	100	600
6103110	WDI1L 10x40	M10	40 mm	12	$\geq 42$	80	$\geq 40$	1.55*	50	500
6103112	WDI1L 12x50	M12	50 mm	15	$\geq 53$	100	$\geq 50$	2.19*	50	300
6103116	WDI1L 16x65	M16	65 mm	20	$\geq 70$	130	$\geq 65$	4.53*	25	150

\* Recommended loads: are stated for multiple use for non-structural applications according to ETAG001, Part 6; apply to anchors correctly installed at maximum embedment depth; include partial safety factor and an overall partial safety factor for action of 1.4. The partial safety factor for action depends on the type of loading and shall be taken from national regulations. All anchor failure modes and the entire relevant product European Technical Assessment must be considered for anchor design. For more information, please refer to the ETA report.



### Complementary

- WDI1 Setting Tool
- WIS Brush
- WIS Blow Pump

### Complementary

- WDI1 SD Stop Drill Bit
- WSDS+ 3CE Concrete Drill Bit