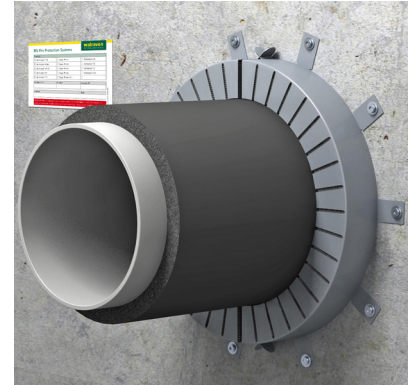
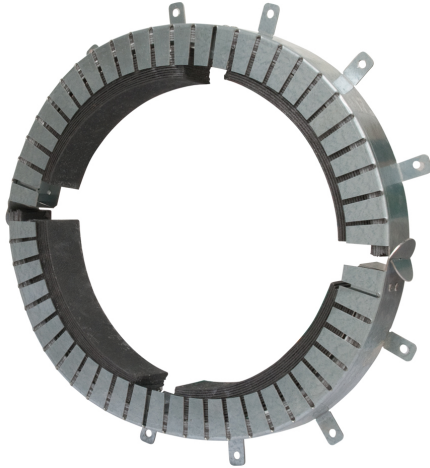


Pacifyre® AWM Max Fire Collar

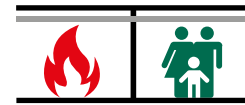
(U 04 37)

for penetrations with flammable pipes 201 - 400 mm



Features and benefits

- suitable for damp conditions
- should be fitted to both sides of a wall and on one side below a ceiling
- build in is possible without additional fixings (by simply bending and sliding the fixing tabs)
- easily installed due to 2 part collar construction
- various finish possibilities, e.g. acrylic sealant, mortar, etc.
- zero distance is possible between fire collars
- European approval: ETA-13/0906



| Part No. | D (mm) | d (mm) | Model | B (mm) | H (mm) | Pack 1 |
|------------|-----------|-----------|----------------|-----------|-----------|--------|
| 2134225225 | 201 - 225 | 239 | 10 fixing tabs | 328 | 50 | 1 |
| 2134250250 | 226 - 250 | 264 | 10 fixing tabs | 353 | 50 | 1 |
| 2134280280 | 251 - 280 | 289 | 12 fixing tabs | 378 | 50 | 1 |
| 2134300300 | 281 - 300 | 314 | 12 fixing tabs | 403 | 50 | 1 |
| 2134315315 | 301 - 315 | 328 | 12 fixing tabs | 417 | 50 | 1 |
| 2134355355 | 316 - 355 | 364 | 12 fixing tabs | 453 | 50 | 1 |
| 2134400400 | 356 - 400 | 414 | 12 fixing tabs | 503 | 50 | 1 |

