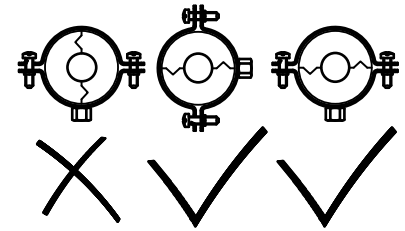
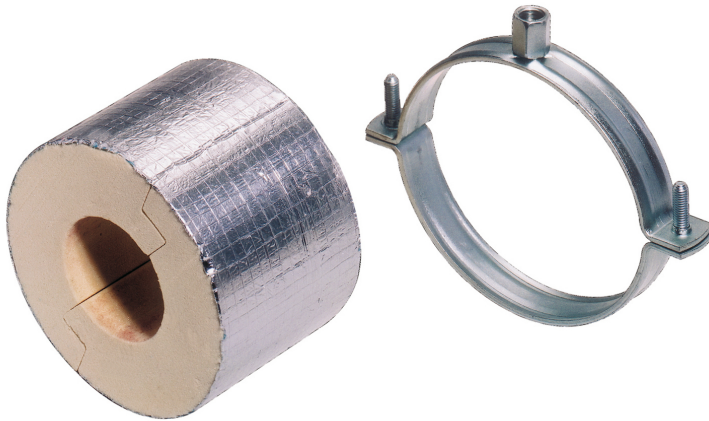


BISOFIX® PIR40

(D 05 25)

for insulated pipes 33.7 - 406.4 mm

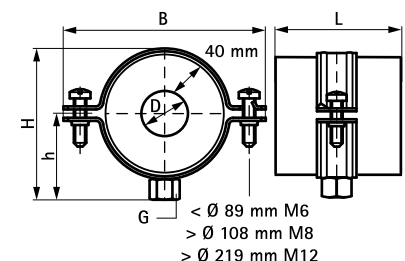
M8/10 - M16



Features and benefits

- insulation shell (thickness 40 mm) with pipe clamp BIS 2S
- for fixing of thermal isolated pipe of steel, copper or stainless steel
- to be used in combination with hard insulation material
- a vapour sealed connection with pipe insulation can easily be made by use of aluminium tape
- when installing the pipe support, always align the contact areas of the insulation shells horizontally (to prevent tensile and pressure forces)
- working temperature from -180 °C to +140 °C
- size and specific weight are tuned to pipe weight
- from pipe Ø 273 mm pipe support needed
- material: clamp of steel; insulation shell made of PIR thermally hardening foam with a moisture proof outer covering of glass-fibre reinforced aluminium foil
- does not contain CFC, HCFC, formaldehyde or cadmium
- excellent thermal and mechanical properties
- clamp: zinc plated

| Part No. | D (mm) | D (°) | DN | G | L | B (mm) | H (mm) | h (mm) | F _{a,z} (N) | Pack 1 |
|----------|-------------|----------|-----|-------|--------|-----------|-----------|-----------|-------------------------|--------|
| 2214033 | 33.7 - 35.0 | 1 | 25 | M8/10 | 75 mm | 153 | 138 | 77 | 370 | 12 |
| 2214042 | 42.4 | 1¼ | 32 | M8/10 | 75 mm | 160 | 144 | 80 | 410 | 12 |
| 2214048 | 48.3 | 1½ | 40 | M8/10 | 75 mm | 169 | 153 | 84 | 430 | 24 |
| 2214054 | 54.0 | - | - | M8/10 | 75 mm | 169 | 153 | 84 | 520 | 24 |
| 2214060 | 60.3 | 2 | 50 | M8/10 | 75 mm | 178 | 163 | 89 | 470 | 24 |
| 2214070 | 70.0 | - | - | M8/10 | 75 mm | 187 | 171 | 93 | 510 | 24 |
| 2214076 | 76.1 | 2½ | 65 | M8/10 | 75 mm | 191 | 175 | 95 | 530 | 24 |
| 2214089 | 88.9 | 3 | 80 | M8/10 | 75 mm | 203 | 187 | 101 | 620 | 18 |
| 2214108 | 108.0 | - | - | M8/10 | 75 mm | 246 | 213 | 114 | 690 | 10 |
| 2214114 | 114.3 | 4 | 100 | M8/10 | 100 mm | 256 | 223 | 119 | 1,530 | 12 |
| 2214133 | 133.0 | - | - | M8/10 | 100 mm | 273 | 240 | 128 | 1,670 | 8 |
| 2214140 | 139.7 | 5 | 125 | M8/10 | 100 mm | 273 | 258 | 130 | 1,730 | 8 |
| 2214159 | 159.0 | - | - | M16 | 100 mm | 273 | 244 | 134 | 2,850 | 24 |
| 2214168 | 168.3 | 6 | 150 | M16 | 100 mm | 306 | 266 | 138 | 2,960 | 24 |
| 2214219 | 219.1 | 8 | 200 | M16 | 150 mm | 388 | 333 | 174 | 4,510 | 6 |
| 2214273 | 273.1 | 10 | 250 | M16 | 150 mm | 436 | 381 | 198 | 5,320 | 6 |
| 2214324 | 323.9 | 12 | 300 | M16 | 150 mm | 486 | 431 | 223 | 6,090 | 1 |
| 2214406 | 406.4 | 16 | 400 | M16 | 150 mm | 569 | 514 | 264 | 7,330 | 1 |



Complementary
 BIS RapidRail® Fixing System
 BIS Fixing Accessories
 BIS Fastenings