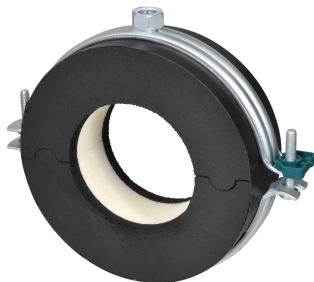


# BISOFIX® E32

(D 05 13)

for insulated pipes 12.0 - 273.0 mm

M8/10 - M16



## Features and benefits

- insulated pipe support with pipe clamp BIS Bifix® G2
- clamp with quick locking system
- for fixing of thermal isolated pipe of steel, copper or stainless steel
- vapour proof glueing to pipe insulation
- when installing the pipe support, always align the contact areas of the insulation shells horizontally (to prevent tensile and pressure forces)
- with self-adhesive strip for easy closing of pipe support
- material: steel clamp; pipe support made of PIR foam (core), synthetic rubber (sides) and a vapour-proof layer of black PVC
- does not contain CFC, HCFC, formaldehyde or cadmium
- excellent thermal and mechanical properties
- BIS Bifix G2 Clamp: surface protection:
  - product is part of the BIS UltraProtect® 1000 system
  - suitable for in- and outdoor applications
  - stands min. 1,000 hours salt spray test (max. 5% red rust) according to ISO 9227
- working temperature from -45 °C to +105 °C

Part No.	D (mm)	D (°)	DN	G	B (mm)	h (mm)	b (mm)	s (mm)	F <sub>a,z</sub> (N)	Pack 1
22115012	12.0	-	-	M8/10	118	57	50	32.0	100	12
22115015	15.0 - 16.0	-	-	M8/10	125	59	50	32.0	100	12
22115018	17.2 - 18.0	-	-	M8/10	125	59	50	30.5	100	12
22115022	21.3 - 22.0	-	-	M8/10	134	64	50	32.0	100	12
22115028	26.9 - 28.0	-	-	M8/10	142	70	50	35.0	100	12
22115035	35.0	1	25	M8/10	155	75	50	36.5	100	16
22115042	42.4	1¼	32	M8/10	148	74	50	32.0	150	18
22115048	48.3	1½	40	M8/10	155	77	50	32.0	225	18
22115054	54.0	-	-	M8/10	164	80	50	32.0	225	9
22115060	60.3	2	50	M8/10	172	83	50	32.0	350	9
22115064	64.0	-	-	M8/10	172	86	50	33.0	350	30
22115070	70.0	-	-	M8/10	181	89	50	33.0	425	30
22115076	76.1	2½	65	M8/10	189	92	50	33.0	575	30
22115089	88.9	3	80	M8/10	201	98	50	33.0	875	12
22115102	101.6	-	-	M8/10	217	107	50	33.0	1,000	12
22115108	108.0	-	-	M8/10	229	110	50	33.0	1,075	12
22115114	114.3	4	100	M8/10	238	106	50	34.0	1,250	12
22115133	133.0	-	-	M8/10	261	123	100	34.0	1,475	4
22115140	139.7	5	125	M8/10	261	127	100	34.0	1,700	4
22115160	159.0	-	-	M8/10	283	129	100	34.0	1,950	10
22115168	168.3	6	150	M16	322	135	100	33.0	2,125	10
22115219	219.1	8	200	M16	368	161	100	33.0	3,525	4
22115273	273.0	10	250	M16		100	100	33.0	4,925	6

\* provided with BIS HD500 Clamp instead of BIS Bifix® G2.

### Complementary

- BIS RapidRail® Fixing System
- BIS Fixing Accessories
- BIS Fastenings