

(A 05 24)

# BISMAT<sup>®</sup> 2000

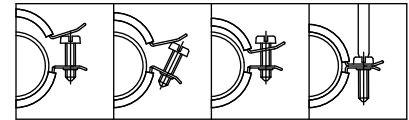
for metal pipes 57 - 219 mm

M8/10 - M10



## Features and benefits

- two-screw clamp
- with BISMAT<sup>®</sup> quick locking system
- from Ø 159 mm: with quick locking system
- material: steel
- zinc plated
- sound insulating lining according DIN 4109
- noise reduction according to ISO 3822-1 up to 23 dB(A)
- noise insulating lining, EPDM rubber, black
- age resistant lining
- tested for fire safety



RAL-GZ 655/B  
Cert.Nr. 2005-08



RAL-GZ 656  
Cert.Nr. 2011-10a



1530-003-15

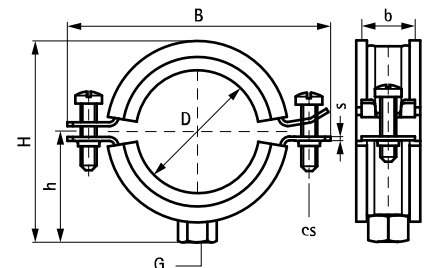
Part No.	D (mm)	D (°)	DN	G	B (mm)	H (mm)	h (mm)	b x s (mm)	cs	F <sub>a,z</sub> (N)	RAL	Pack 1
3403064	57 - 64	2	50	M8/10	107	90	52	23 x 2.00	M6	520	RAL <sup>2</sup>	50
3403070	64 - 70	-	-	M8/10	115	99	56	23 x 2.00	M6	520	RAL <sup>2</sup>	50
3403080	73 - 80	2½	65	M8/10	126	109	61	23 x 2.00	M6	520	RAL <sup>2</sup>	50
3403091	83 - 91	3	80	M8/10	137	121	67	25 x 2.50	M6	935	RAL <sup>2</sup>	25
3403105	100 - 105	-	-	M8/10	152	135	74	25 x 2.50	M6	935	RAL <sup>2</sup>	25
3403114	108 - 114	4	100	M8/10	160	144	79	25 x 2.50	M6	935	RAL <sup>2</sup>	25
3403119	116 - 119	-	-	M8/10	165	149	81	25 x 2.50	M6	935	RAL <sup>1</sup>	25
3403125	122 - 125	-	-	M8/10	173	157	85	25 x 2.50	M6	935	RAL <sup>1</sup>	25
3403141	133 - 141	5	125	M8/10	189	170	92	25 x 2.50	M6	935	RAL <sup>1</sup>	25
3423168	159 - 168	6	150	M10	233	198	102	25 x 3.00	M8	1,220	-	10
3423210	200 - 210	-	-	M10	273	239	122	25 x 3.00	M8	1,220	-	10
3423219	210 - 219	8	200	M10	284	250	128	25 x 3.00	M8	1,220	-	10

RAL<sup>1</sup> = tested, certified and monitored by a third party according to RAL-GZ 655/B.

RAL<sup>2</sup> = tested, certified and monitored by a third party according to RAL-GZ 655/B and RAL-GZ 656.

From Ø 159 mm: with quick locking system.

For detailed technical information about our RAL marked products, please see the RAL datasheet in our web catalogue.



## Complementary

- Walraven RapidRail<sup>®</sup> Fixing System
- Walraven Fixing Accessories
- Walraven Fastenings