

# BIS Strut Washer – Flat (BUP1000)

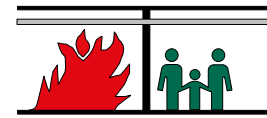
(H 24 80)

to make Strut rail fabrications

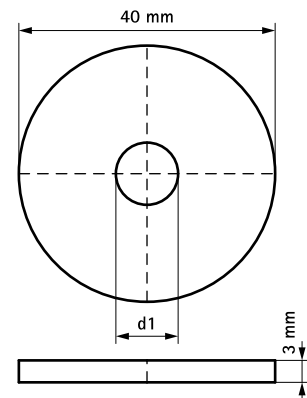


## Features and benefits

- flat washer
- material: steel 1.0332
- surface protection:
  - product is part of the BIS UltraProtect® 1000 system
  - suitable for in- and outdoor applications
  - stands min. 1,000 hours salt spray test (max. 5% red rust) according to ISO 9227



Part No.	B (mm)	d1 (mm)	For Rail	Pack 1
6538 1 508	40	Ø 8.4	Strut	50
6538 1 510	40	Ø 10.5	Strut	100
6538 1 512	40	Ø 13.0	Strut	100
Ø 10.5 and above tested for fire safety. Also available in stainless steel 1.4401 (AISI 316).				



## Complementary

BIS RapidStrut® Cantilever Arm (BUP1000)  
 BIS RapidStrut® Fixing Rail DS 5  
 (BUP1000)