

# BIS RapidRail® Cross Connector

(G 35 50)

to make BIS RapidRail® fabrications



## Features and benefits

- connector with pre-assembled BIS RapidRail® Slide nut(s)
- to make rail fabrications
- ready-to-use pre-assembled for a quick fixing, and retains assembly in place before final tightening
- material: metal parts made of steel 1.0332; spring(s) made of POM (polyoxymethylene), green
- zinc plated

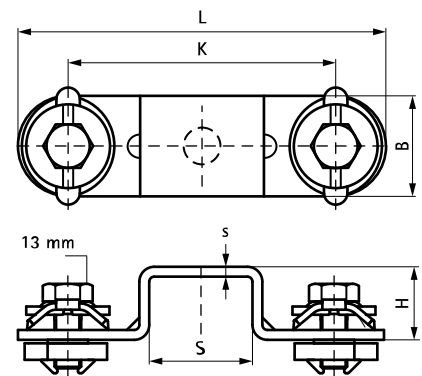


RAL-GZ 655/D  
Cert.Nr. 2012-10

| Part No. | L      | B    | H    | s    | S    | k    | T <sub>(inst.)</sub> | For Rail | F <sub>a,z</sub> | F <sub>a,x</sub> | RAL              | Pack 1 |
|----------|--------|------|------|------|------|------|----------------------|----------|------------------|------------------|------------------|--------|
|          |        | (mm) | (mm) | (mm) | (mm) | (mm) | (Nm)                 |          | (N)              | (N)              |                  |        |
| 6584150  | 104 mm | 30   | 20   | 3.0  | 28   | 74   | 15.0                 | 27x18    | 1,226            | 689              | RAL <sup>1</sup> | 25     |
| 6584151  | 112 mm | 30   | 17   | 3.0  | 31   | 82   | 15.0                 | 30x15    | 1,226            | 689              | RAL <sup>1</sup> | 25     |
| 6584152  | 109 mm | 30   | 22   | 3.0  | 31   | 79   | 15.0                 | 30x20    | 1,226            | 689              | RAL <sup>1</sup> | 25     |
| 6584153  | 97 mm  | 30   | 32   | 3.0  | 31   | 67   | 15.0                 | 30x30    | 1,226            | 689              | -                | 25     |
| 6584156  | 117 mm | 30   | 42   | 3.0  | 39   | 87   | 15.0                 | 38x40    | 1,226            | 689              | -                | 25     |

*RAL<sup>1</sup> = tested, certified and monitored by a third party according to RAL-GZ 655/D in combination with Rail 30x15, 30x30, 30x20 and 30x45.*

*For detailed technical information about our RAL marked products, please see the RAL datasheet in our web catalogue.*



## Complementary

Walraven RapidRail® Fixing Rail