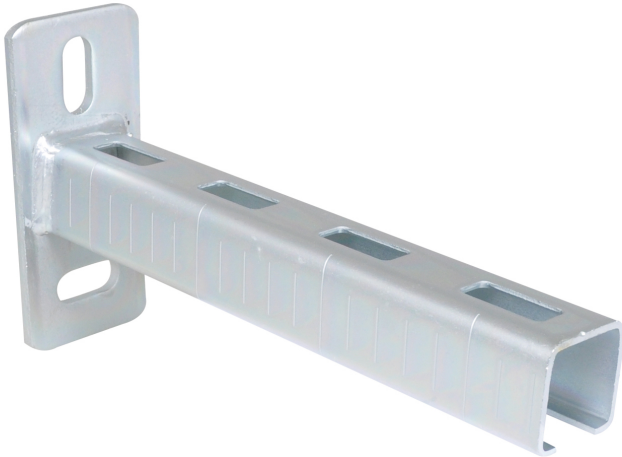


BIS RapidRail® Cantilever Arm (BUP1000)

(G 10 05)

fixing to wall or ceiling

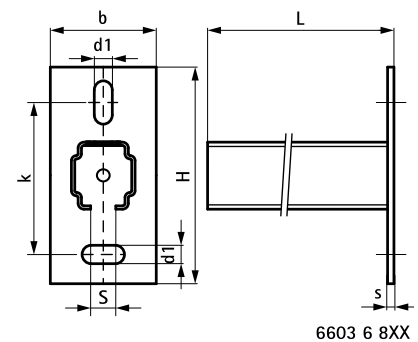
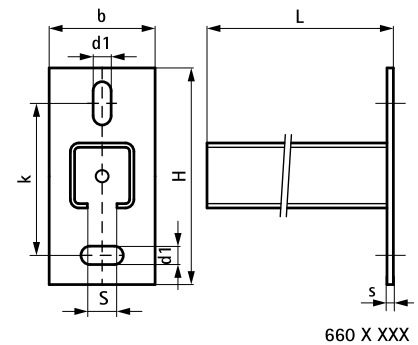


Features and benefits

- wall plate with welded C-profile
- perfectly suitable for hanging to the ceiling
- slots at 90° to each other to simplify fixing
- CO₂ welded
- a continuous graduated centimetre scale on one side
- unique perforation on rail WM15, WM30 and WM35 allows for hanging on both sides
- material: steel
- surface protection:
 - product is part of the Walraven BIS UltraProtect® 1000 system
 - suitable for in- and outdoor applications
 - stands min. 1,000 hours salt spray test (max. 5% red rust) according to ISO 9227
- for more information about the max. allowed load ($F_{a,z}$) please refer to the loading tables or our online datasheet 'Technical Details BIS RapidRail®'

Part No.	L	B	H	s	d1	S	k	From rail	Pack 1
		(mm)	(mm)	(mm)	(mm)	(mm)	(mm)		
6603015	150 mm	38	110	4.0	25 x 11	15	70	WM0 - 27x18	20
6603019	200 mm	38	110	4.0	25 x 11	15	70	WM0 - 27x18	20
6603030	300 mm	38	110	4.0	25 x 11	15	70	WM0 - 27x18	20
6603050	500 mm	38	110	4.0	25 x 11	15	70	WM0 - 27x18	20
6603120	200 mm	48	110	5.0	25 x 11	15	70	WM1 - 30x15	20
6603130	300 mm	48	110	5.0	25 x 11	15	70	WM1 - 30x15	20
6603715	150 mm	38	110	4.0	25 x 11	15	70	WM15 - 30x20	20
6603720	200 mm	38	110	4.0	25 x 11	15	70	WM15 - 30x20	20
6603725	250 mm	38	110	4.0	25 x 11	15	70	WM15 - 30x20	20
6603220	200 mm	48	110	5.0	25 x 11	15	70	WM2 - 30x30	10
6603225	250 mm	48	110	5.0	25 x 11	15	70	WM2 - 30x30	10
6603230	300 mm	48	110	5.0	25 x 11	15	70	WM2 - 30x30	10
6603240	400 mm	48	110	5.0	25 x 11	15	70	WM2 - 30x30	20
6603250	500 mm	48	110	5.0	25 x 11	15	70	WM2 - 30x30	20
66036820	200 mm	48	130	5.0	25 x 11	15	90	WM35 - 38x40	10
66036825	250 mm	48	130	5.0	25 x 11	15	90	WM35 - 38x40	10
66036835	350 mm	48	130	5.0	25 x 11	15	90	WM35 - 38x40	10
66036840	400 mm	48	130	5.0	25 x 11	15	90	WM35 - 38x40	10
66036850	500 mm	48	130	5.0	25 x 11	15	90	WM35 - 38x40	10
66036860	600 mm	48	130	5.0	25 x 11	15	90	WM35 - 38x40	8
66036875	750 mm	48	130	5.0	25 x 11	15	90	WM35 - 38x40	8
66036805	1,050 mm	48	130	5.0	25 x 11	15	90	WM35 - 38x40	-

For more information about the max. allowed load ($F_{a,z}$) please refer to the loading tables or our online datasheet 'Technical Details BIS RapidRail®'.



Complementary

- BIS Rail Prop
- BIS RapidRail® Slide Nut
- BIS RapidRail® Hammerfix

Complementary

- BIS Rail End Cap
- BIS Washer (BUP1000)