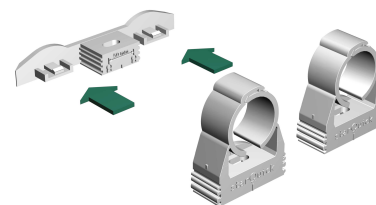
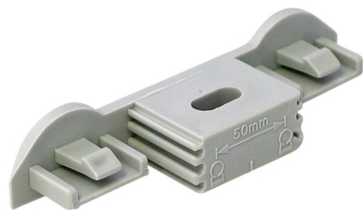


starQuick® Duo Wall Plate

(C 05 20)

accessories BIS starQuick® Pipe Clamps without Nut

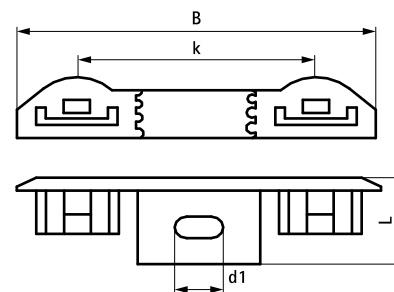


Features and Benefits

- for fixing of two pipes with starQuick® Clamps
- suitable for starQuick® Clamps up to SQ-20
- the distance between the pipe and the wall is equal to that of a single clip
- material: modified PA6 (polyamide), grey or white
- resistant to UV, ageing, oil and petrol
- no corrosion, recyclable, halogen free
- temperature resistance from approx. -40 °C to approx. +90 °C (constant); short to approx. +130 °C

Part No.	Model	L	B	d1	k	Colour	F _{a,z}	Pack 1	Pack 2
		(mm)	(mm)	(mm)	(mm)		(N)		
0854000	-	20 mm	75	4.8 x 10	50	Grey (RAL 7035)	600	100	1,200
0855000	-	20 mm	75	4.8 x 10	50	White (RAL 9003)	600	100	1,200
0854300	With hammer-in screw	20 mm	75	4.8 x 10	50	Grey (RAL 7035)	600	50	600

Hammer-in screw: suitable for fixing into concrete, aerated concrete, brick.



Complementary
starQuick® Hammer-in Screw

Alternative
starQuick® Rail