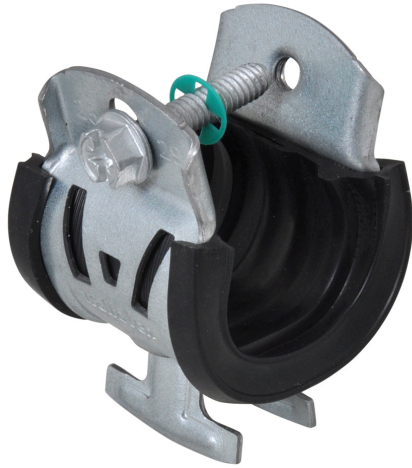


Walraven W2000 Cushion Clamp

(H 32 205)

to be used for metal pipe applications 9 - 63 mm



Features and Benefits

- the new alternative to the Cushion Clamp
- one-piece design - no loose parts
- easier, faster, safer - installs with one hand
- 3-way screw head - Phillips, flat and hex
- unique design allows one clamp to fit multiple pipe sizes - less items to stock
- W Series Clamps are boxed for easy handling - no more bags
- material: steel 1.0242
- surface treatment: high grade Zn-Mg based coating (600 hours salt spray)
- black EPDM rubber lining protects against galvanic corrosion
- noise/vibration insulating lining
- age resistant lining
- Test Reports:
 - Strength and corrosion:UL 1565 Listed
 - Noise emission:2016-SG-Bauakustik-1647-001-16



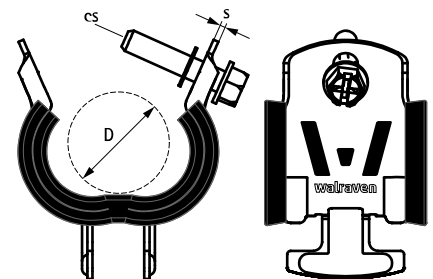
Part No.	D (mm)	D (")	D / CTS (")	D / ACR (")	D / IPS (")	s (mm)	cs	F _{a,z} (N)	F _{a,z} (lbs)	ULS	ULC	Pack 1
2025004	9 - 10	0.354 - 0.394	1/4	3/8	-	1.25	1/4"	890	200	ULS	ULC	50
2025006	11 - 13	0.433 - 0.512	3/8	1/2	-	1.25	1/4"	890	200	ULS	ULC	50
2025008	14 - 16	0.551 - 0.630	1/2	5/8	1/4	1.25	1/4"	890	200	ULS	ULC	50
2025010	17 - 19	0.670 - 0.748	5/8	3/4	3/8	1.25	1/4"	980	220	ULS	ULC	50
2025012	20 - 22	0.787 - 0.866	3/4	7/8	1/2	1.25	1/4"	980	220	ULS	ULC	50
2025014	25 - 29	0.984 - 1.142	1	1-1/8	3/4	1.50	1/4"	1,780	400	ULS	ULC	50
2025016	32 - 35	1.260 - 1.378	1-1/4	1-3/8	1	1.50	1/4"	1,780	400	ULS	ULC	50
2025018	37 - 40	-	-	-	-	1.50	1/4"	1,780	-	ULS	ULC	50
2025020	40 - 43	1.575 - 1.693	1-1/2	1-5/8	1-1/4	1.75	5/16"	1,780	400	ULS	ULC	25
2025022	48 - 50	1.890 - 1.969	-	-	1-1/2	1.75	5/16"	1,780	400	ULS	ULC	25
2025024	54 - 56	2.126 - 2.205	2	2-1/8	-	1.75	5/16"	1,780	400	ULS	ULC	25
2025026	60 - 63	2.362 - 2.480	-	-	2	1.75	5/16"	1,780	400	ULS	ULC	25

For additional testing information, please contact our Sales Office!

CTS = Copper Tube Size

ACR = Air-Conditioning and Refrigeration pipes

IPS = Iron Pipe Size



Complementary

Walraven RapidStrut® Fixing Rail
(BUP1000)

Alternative

Walraven W5000 Cushion Clamp