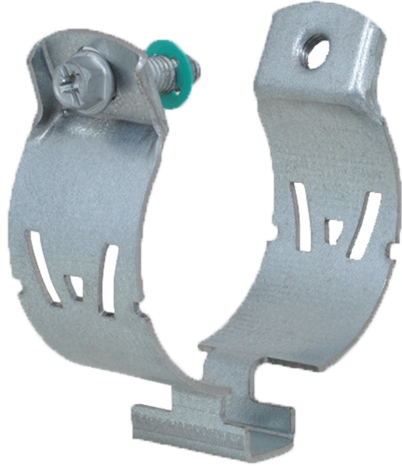


# Walraven W1000 Strut Clamp

(H 32 215)

to be used with steel pipes and EMT conduit 18 - 60 mm



## Features and Benefits

- the new alternative to the standard Strut Clamp
- 3-way use, on strut, on threaded rod, directly on wall or ceiling
- one-piece design - no loose parts
- easier, faster, safer - installs with one hand
- 3-way screw head - Phillips, flat and hex
- unique design allows one clamp to fit multiple pipe sizes - less items to stock
- W Series Clamps are boxed for easy handling - no more bags
- material: steel 1.0242
- surface treatment: high grade Zn-Mg based coating (600 hours salt spray)
- Test Reports:
  - Strength and corrosion:UL 1565 Listed



Part No.	D (mm)	D / IPS (")	D / EMT (")	G	s (mm)	cs	F <sub>a,z</sub> (N)	F <sub>a,z</sub> (lbs)	Pack 1
2015021	18 - 21	1/2	1/2	1/4"	1.25	1/4"	890	200	50
2015027	23 - 27	3/4	3/4	3/8"	1.25	1/4"	890	200	50
2015033	29 - 33	1	1	3/8"	1.25	1/4"	980	220	25
2015042	38 - 42	1-1/4	1-1/4	3/8"	1.25	1/4"	980	220	25
2015048	44 - 48	1-1/2	1-1/2	3/8"	1.50	1/4"	1,780	400	25
2015060	56 - 60	2	2	3/8"	1.50	1/4"	1,780	400	25

*For additional testing information, please contact our Sales Office!*

