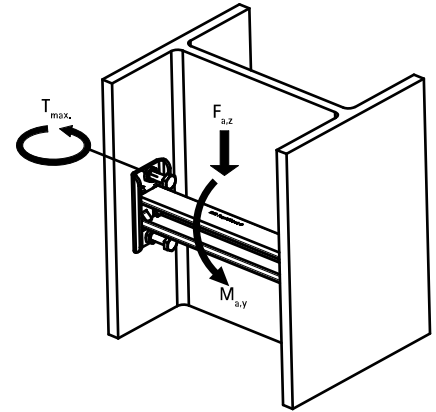
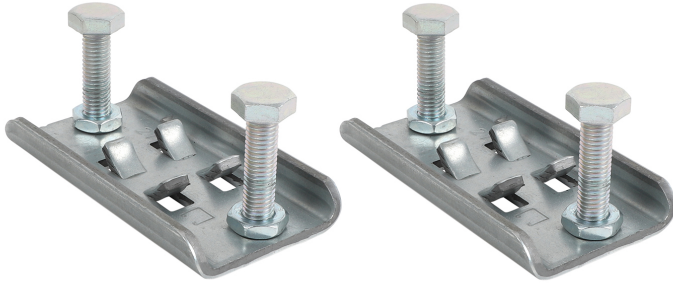


# Walraven Strut Inter Flange Clamp

(H 36 50)

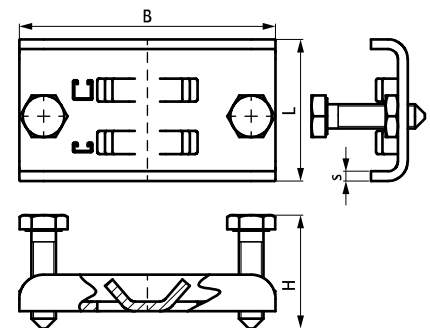
fixing to steel beam



## Features and Benefits

- set of two clamping plates, to be installed in combination with Strut Rail
- for connecting installation between the flanges of I- or U-profile steelwork without drilling or welding
- material: clamp made of steel 1.0242 (S250GD); hexagon head bolts M10x40 with tip: steel class 8.8 (EN-ISO 898-1); hexagon thin nuts M10 DIN 439-B: steel class 04 (EM-ISO 898-2)
- clamp: ZM310-MAC (pre-galvanized); fasteners: zinc plated ISO 2081-Fe/Zn5/A (EN ISO 2081:2008)

| Part No. | L  | B    | H    | s    | T <sub>(inst.)</sub> | For Rail            | F <sub>a,z</sub> | M <sub>a,y</sub> | Pack 1 | Pack 2 |
|----------|----|------|------|------|----------------------|---------------------|------------------|------------------|--------|--------|
|          |    | (mm) | (mm) | (mm) | (Nm)                 |                     | (N)              | (Nm)             |        |        |
| 6078031  | 58 | 105  | 46   | 4    | 25.0                 | Strut 41x21 + 41x41 | 2,100            | 75.0             | 1      | 10     |



### Complementary

- Walraven RapidStrut® Fixing Rail (pg)
- Walraven RapidStrut® Slide Nut G2 (BUP1000)
- Walraven RapidStrut® Hammerfix G2 (BUP1000)

### Complementary

- Walraven RapidStrut® Slide Nut MS (zp)