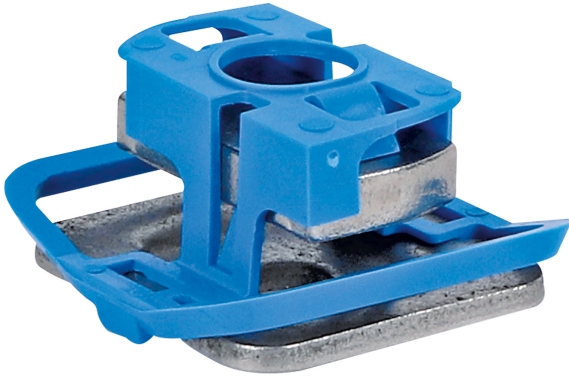


# Walraven RapidStrut® Stainless Steel Slide Nut G2

(M 52 05)

fixing to Strut rail

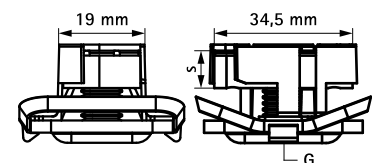
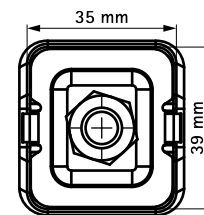


## Features and Benefits

- slide nut with washer and BIS RapidStrut® spring
- to connect pipe clamps to rails by using threaded rods
- ready-to-use pre-assembled for a quick fixing, and retains assembly in place before final tightening
- material: stainless steel 1.4401 (A4) - EN 10088, AISI 316; spring(s) made of POM (PolyOxyMethylene), blue (according to RAL 5015)

Part No.	G	s (mm)	T <sub>inst</sub> (Nm)	For Rail	F <sub>a,z</sub> (N)	F <sub>a,x</sub> (N)	Pack 1	Pack 2
665175108	M8	6.0	11	Strut	3,120	1,100	20	200
665175110	M10	8.0	15	Strut	5,000	1,250	20	200

*Tested values in combination with BIS RapidStrut® Rail 41x41x2.5mm.  
More details can be found on the Technical Datasheet.*



## Complementary

- Walraven RapidStrut® Stainless Steel Fixing Rail
- Walraven RapidStrut® Stainless Steel Fixing Rail Double
- Walraven RapidStrut® Stainless Steel