

# Walraven RapidRail® Stainless Steel Hammerfix

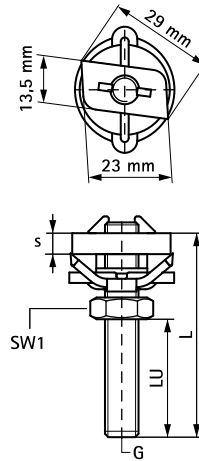
(M 29 25)

fixing to Walraven RapidRail®



## Features and Benefits

- slide nut with stud bolt, washer and BIS RapidRail® spring
- ready-to-use pre-assembled for a quick fixing, and retains assembly in place before final tightening
- material: metal parts made of stainless steel 1.4401 (AISI 316); spring(s) made of POM (polyoxymethylene), blue



Part No.	G	L	LU (mm)	b x s (mm)	SW1 (mm)	T <sub>(inst.)</sub> (Nm)	For Rail	F <sub>a,z</sub> (N)	Pack 1	Pack 2
6527062	M6	25 mm	11	13.5 x 4.0	10	7.5	30x15, 30x20, 30x30	2,000	25	250
6527084	M8	40 mm	25	13.5 x 5.0	13	10.0	30x15, 30x20, 30x30	2,700	25	250
6527088	M8	80 mm	65	13.5 x 5.0	13	10.0	30x15, 30x20, 30x30	2,700	25	250
6527094	M10	40 mm	22	14.0 x 5.0	17	10.0	30x15, 30x20, 30x30	2,900	25	250
6527098	M10	80 mm	62	14.0 x 5.0	17	10.0	30x15, 30x20, 30x30	2,900	25	250

## Complementary

Walraven RapidRail® Stainless Steel Fixing  
 Rail  
 Walraven RapidRail® Stainless Steel  
 Cantilever Arm