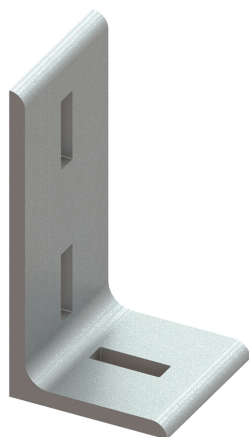


## Walraven Maxx Profile Connector 90°

(H2 05 16)

to make Maxx rail fabrications

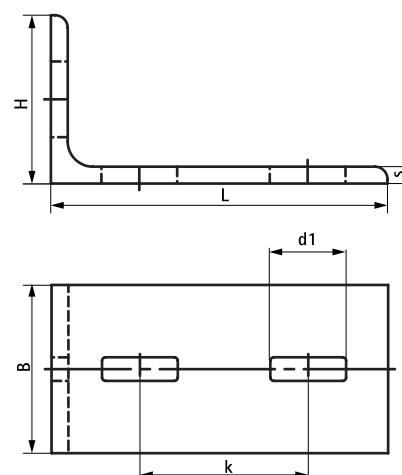


### Features and Benefits

- 3-hole connector for Maxx profiles
- made of L-steel for extra stability
- packed per piece
- material: steel S235JR
- hot dip galvanized

Part No.	Model	Type	L	B	H	s	d1	k	F <sub>a,x</sub>	F <sub>a,x 2</sub>	Pack 1
				(mm)	(mm)	(mm)	(mm)	(mm)	(N)	(N)	
6681018	3 holes	AC80/90-3	200 mm	80	100	10.0	45 x 14	100	5,000*	8,250**	1
6681020	3 holes	AC100/90-3	200 mm	100	100	10.0	45 x 14	100	5,000*	8,250**	-

\* = When using the connector with 1 pc. Maxx Hammerfix (65219214)  
 \*\* = When using the connector with 2 pcs. Maxx Hammerfix (65219214)



### Complementary

Walraven Maxx Heavy Rail Profile  
 Walraven Maxx Hammerfix