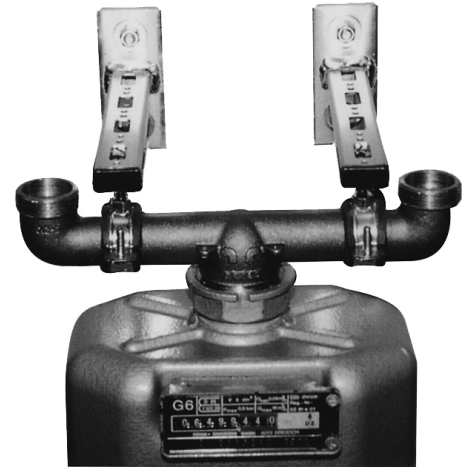
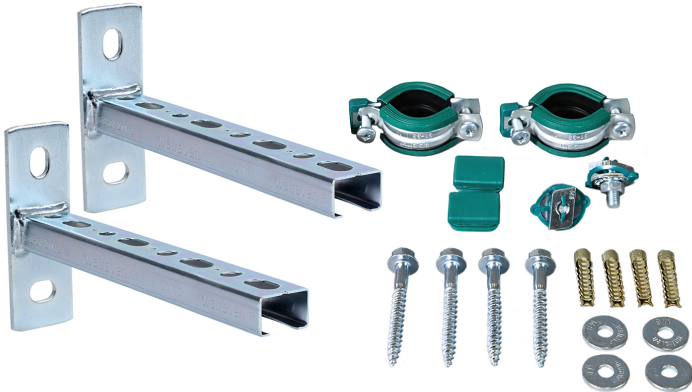


Walraven Gas Meter Holder

(G 25 20)

fixing of gas meter 30 - 35 mm



Features and Benefits

- universal fixing kit
 - for wall fixing of a gas meter
 - slots at 90° to each other to simplify fixing
 - cantilever arm: CO₂ welded
 - material: steel
 - zinc plated
- consists of:
 - 2 Cantilever arms
 - 2 Clamps BIS Bifix® G2 with lining
 - 4 Star plugs
 - 1 Mounting kit

Part No.	D (mm)	D (°)	L	From Rail	Pack 1
4923135	30 - 35	1	200 mm	30x15	1

