

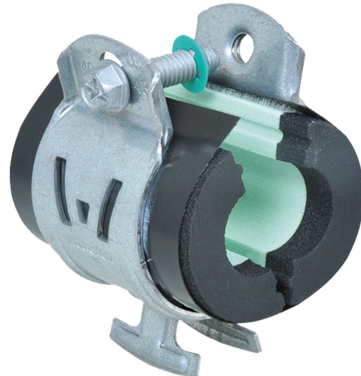
W6000 Insulated Clamp

(H 32 220)

to be used with pipes that need to be insulated 6 - 43 mm



206 1 XXX



206 2 XXX

Features and Benefits

- for installation of thermal isolated steel, copper, stainless steel or plastic pipe
- one-piece design - no loose parts
- easier, faster, safer - installs with one hand
- 3-way screw head - Phillips, flat and hex
- available with 3/8" or 1/2" integrated thermal insulation block
- to be used in combination with soft insulation material
- vapor-proof gluing to pipe insulation
- excellent thermal and mechanical properties
- W Series Clamps are boxed for easy handling - no more bags
- material: Clamp: made of steel 1.0242; Insulation shell: PIR thermally hardening foam (core), synthetic rubber (sides) and vapor-proof layer of black PVC
- surface treatment: high grade Zn-Mg based coating (600 hours salt spray)

Part No.	D (mm)	D / CTS (")	D / ACR (")	Model	F _{a,z} (N)	F _{a,z} (lbs)	Pack 1
2061006	6 - 7	-	1/4	3/8" thermal insulation block	160	36	25
2061010	9 - 10	1/4	3/8	3/8" thermal insulation block	160	36	25
2061013	11 - 13	3/8	1/2	3/8" thermal insulation block	300	68	25
2061016	14 - 16	1/2	5/8	3/8" thermal insulation block	300	68	25
2061019	17 - 19	5/8	3/4	3/8" thermal insulation block	400	91	25
2061022	20 - 22	3/4	7/8	3/8" thermal insulation block	400	91	25
2061029	25 - 29	1	1-1/8	3/8" thermal insulation block	700	159	25
2061035	32 - 35	1-1/4	1-3/8	3/8" thermal insulation block	700	159	25
2061041	40 - 43	1-1/2	1-5/8	3/8" thermal insulation block	1,000	227	25
2062006	6 - 7	-	1/4	1/2" thermal insulation block	160	36	25
2062010	9 - 10	1/4	3/8	1/2" thermal insulation block	160	36	25
2062013	11 - 13	3/8	1/2	1/2" thermal insulation block	300	68	25
2062016	14 - 16	1/2	5/8	1/2" thermal insulation block	300	68	25
2062019	17 - 19	5/8	3/4	1/2" thermal insulation block	400	91	25
2062022	20 - 22	3/4	7/8	1/2" thermal insulation block	400	91	25
2062029	25 - 29	1	1-1/8	1/2" thermal insulation block	700	159	25
2062035	32 - 35	1-1/4	1-3/8	1/2" thermal insulation block	700	159	25
2062041	40 - 43	1-1/2	1-5/8	1/2" thermal insulation block	1,000	227	25

