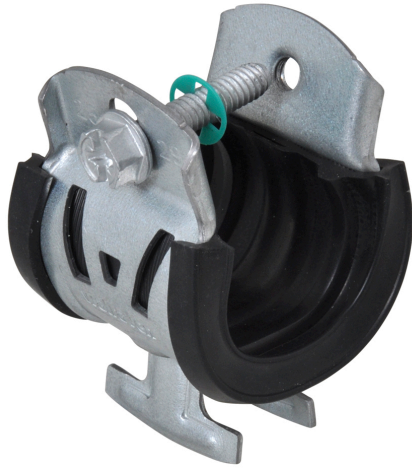


W2000 Cushion Clamp

(H 32 205)

to be used for metal pipe applications 9 - 63 mm



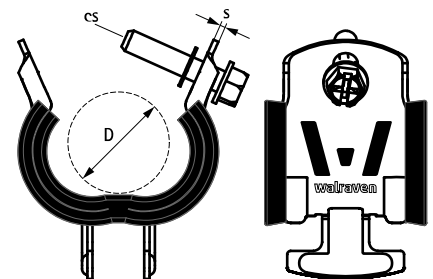
Features and Benefits

- the new alternative to the Cushion Clamp
- one-piece design - no loose parts
- easier, faster, safer - installs with one hand
- 3-way screw head - Phillips, flat and hex
- unique design allows one clamp to fit multiple pipe sizes - less items to stock
- W Series Clamps are boxed for easy handling - no more bags
- material: steel 1.0242
- surface treatment: high grade Zn-Mg based coating (600 hours salt spray)
- black EPDM rubber lining protects against galvanic corrosion
- noise/vibration insulating lining
- age resistant lining
- Test Reports:
 - Strength and corrosion:UL 1565 Listed
 - Noise emission:2016-SG-Bauakustik-1647-001-16



| Part No. | D (mm) | D (") | D / CTS (") | D / ACR (") | D / IPS (") | s (mm) | cs | F _{a,z} (N) | F _{a,z} (lbs) | ULS | ULC | Pack 1 |
|----------|-----------|------------------|-------------------|-------------------|-------------------|-----------|-------|-------------------------|---------------------------|-----|-----|-----------|
| 2025004 | 9 - 10 | 0.354 - 0.394 | 1/4 | 3/8 | - | 1.25 | 1/4" | 890 | 200 | ULS | ULC | 50 |
| 2025006 | 11 - 13 | 0.433 - 0.512 | 3/8 | 1/2 | - | 1.25 | 1/4" | 890 | 200 | ULS | ULC | 50 |
| 2025008 | 14 - 16 | 0.551 - 0.630 | 1/2 | 5/8 | 1/4 | 1.25 | 1/4" | 890 | 200 | ULS | ULC | 50 |
| 2025010 | 17 - 19 | 0.670 - 0.748 | 5/8 | 3/4 | 3/8 | 1.25 | 1/4" | 980 | 220 | ULS | ULC | 50 |
| 2025012 | 20 - 22 | 0.787 - 0.866 | 3/4 | 7/8 | 1/2 | 1.25 | 1/4" | 980 | 220 | ULS | ULC | 50 |
| 2025014 | 25 - 29 | 0.984 - 1.142 | 1 | 1-1/8 | 3/4 | 1.50 | 1/4" | 1,780 | 400 | ULS | ULC | 50 |
| 2025016 | 32 - 35 | 1.260 - 1.378 | 1-1/4 | 1-3/8 | 1 | 1.50 | 1/4" | 1,780 | 400 | ULS | ULC | 50 |
| 2025020 | 40 - 43 | 1.575 - 1.693 | 1-1/2 | 1-5/8 | 1-1/4 | 1.75 | 5/16" | 1,780 | 400 | ULS | ULC | 25 |
| 2025022 | 48 - 50 | 1.890 - 1.969 | - | - | 1-1/2 | 1.75 | 5/16" | 1,780 | 400 | ULS | ULC | 25 |
| 2025024 | 54 - 56 | 2.126 - 2.205 | 2 | 2-1/8 | - | 1.75 | 5/16" | 1,780 | 400 | ULS | ULC | 25 |
| 2025026 | 60 - 63 | 2.362 - 2.480 | - | - | 2 | 1.75 | 5/16" | 1,780 | 400 | ULS | ULC | 25 |

For additional testing information, please contact our Sales Office!



Complementary

BIS RapidStrut® Fixing Rail (BUP1000)

Alternative

W5000 Cushion Clamp