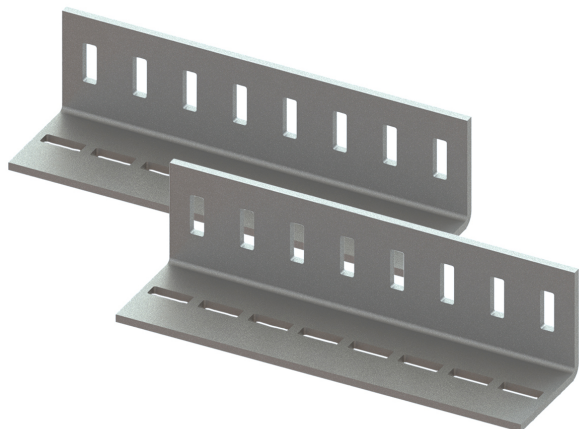


Maxx Linear Connector Set

(H2 05 31)

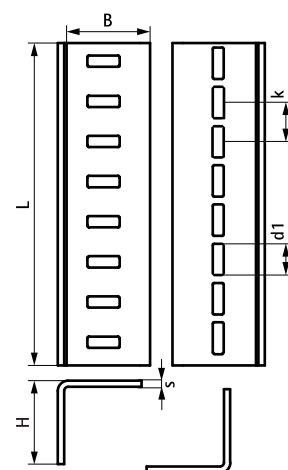
to make Maxx rail fabrications



Features and Benefits

- for linear connection of Maxx profiles type MX100 and MX120
- to be used in pairs
- delivery and assembly always in pairs (1 piece = set of 2)
- material: steel S235JR
- hot dip galvanized

Part No.	Type	L	B (mm)	H (mm)	s (mm)	d1 (mm)	k (mm)	Pack 1
6589300	LC100/120	405 mm	102	102	8	40 x 14	50	-



Complementary

Maxx Heavy Rail Profile
Maxx Hammerfix