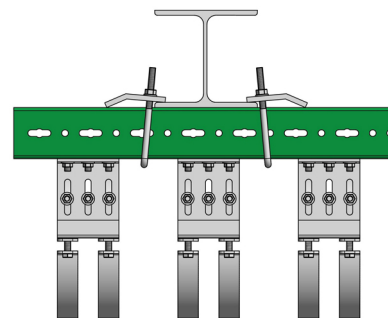
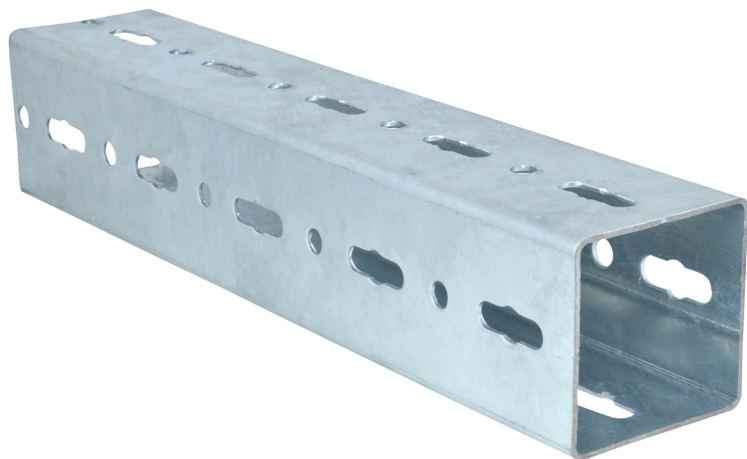


Maxx Heavy Rail Profile

(H2 05 05)

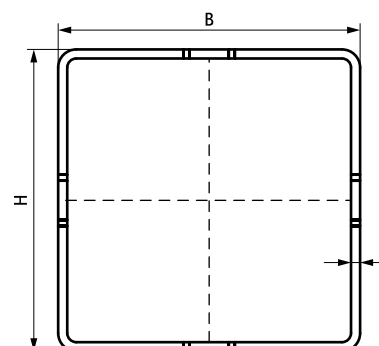
for heavy duty pipework and industrial installation



Features and Benefits

- closed square profile
- offers support for fixings to pipes and devices
- with continuous perforation on all sides
- material: steel
- hot dip galvanized

Part No.	Type	L	B	H	s	Weight	Pack 1	App.
			(mm)	(mm)	(mm)	(kg)		
65019610	IP100	6 m	100	100	3.0	8,16	1	m.
65019612	IP120	6 m	100	120	4.0	11,94	1	m.



Complementary

- Maxx Wall Plate
- Maxx Profile Connector 90°
- Maxx Hammerfix

Complementary

- Maxx Bolt Set (ZFC)
- Maxx Linear Connector
- Maxx T-Connector