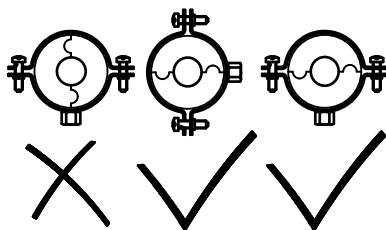
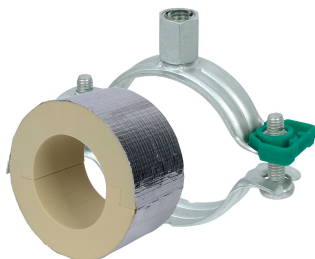


# BISOFIX<sup>®</sup> PIR50 + Bifix<sup>®</sup> G2

(D 03 84)

for insulated pipes 12.0 - 114.3 mm



## Features and Benefits

- for combination with rigid foam insulation
- cover joints with aluminium tape
- insulating pipe support with Bifix<sup>®</sup> G2 clamp
- Bifix<sup>®</sup> G2 with M8/M10 connection nut
- does not contain CFC, HCFC, formaldehyde or cadmium
- fire class B2
- PIR density for D <110mm = 80kg/m<sup>3</sup>
- PIR density for D >110mm = 120kg/m<sup>3</sup>
- thermal conductivity lambda (approx. value): 0.30 W/(mK)
- surface protection:
  - product is part of the Walraven BIS UltraProtect<sup>®</sup> 1000 system
  - suitable for in- and outdoor applications
  - stands min. 1,000 hours salt spray test (max. 5% red rust) according to ISO 9227
- temperature range -45 °C - +105 °C

Part No.	Consists Of	D (mm)	Model	F <sub>a,z</sub> (N)	Pack 1
I503008012	I500000012 + 3008115	12.0	BISOFIX <sup>®</sup> PIR50 + Bifix <sup>®</sup> G2 Clamp	220	25
I503008015	I500000015 + 3008115	15.0 - 16.0	BISOFIX <sup>®</sup> PIR50 + Bifix <sup>®</sup> G2 Clamp	250	25
I503008018	I500000018 + 3008115	17.2 - 18.0	BISOFIX <sup>®</sup> PIR50 + Bifix <sup>®</sup> G2 Clamp	300	25
I503008022	I500000022 + 3008130	21.3 - 22.0	BISOFIX <sup>®</sup> PIR50 + Bifix <sup>®</sup> G2 Clamp	340	25
I503008028	I500000028 + 3008130	26.9 - 28.0	BISOFIX <sup>®</sup> PIR50 + Bifix <sup>®</sup> G2 Clamp	350	25
I503008034	I500000034 + 3008140	33.7 - 35.0	BISOFIX <sup>®</sup> PIR50 + Bifix <sup>®</sup> G2 Clamp	370	25
I503008042	I500000042 + 3008140	42.4	BISOFIX <sup>®</sup> PIR50 + Bifix <sup>®</sup> G2 Clamp	470	25
I503008048	I500000048 + 3008140	48.3	BISOFIX <sup>®</sup> PIR50 + Bifix <sup>®</sup> G2 Clamp	500	15
I503008054	I500000054 + 3008160	54.0	BISOFIX <sup>®</sup> PIR50 + Bifix <sup>®</sup> G2 Clamp	520	15
I503008057	I500000057 + 3008160	56.0 - 57.0	BISOFIX <sup>®</sup> PIR50 + Bifix <sup>®</sup> G2 Clamp	520	15
I503008060	I500000060 + 3008160	60.3	BISOFIX <sup>®</sup> PIR50 + Bifix <sup>®</sup> G2 Clamp	540	15
I503008064	I500000064 + 3008169	64.0	BISOFIX <sup>®</sup> PIR50 + Bifix <sup>®</sup> G2 Clamp	550	15
I503008070	I500000070 + 3008169	70.0	BISOFIX <sup>®</sup> PIR50 + Bifix <sup>®</sup> G2 Clamp	600	15
I503008076	I500000076 + 3008180	76.1	BISOFIX <sup>®</sup> PIR50 + Bifix <sup>®</sup> G2 Clamp	650	15
I503008089	I500000089 + 3008200	88.9	BISOFIX <sup>®</sup> PIR50 + Bifix <sup>®</sup> G2 Clamp	690	15
I503008102	I500000102 + 3008200	101.6	BISOFIX <sup>®</sup> PIR50 + Bifix <sup>®</sup> G2 Clamp	720	15
I503008108	I500000108 + 3008210	108.0	BISOFIX <sup>®</sup> PIR50 + Bifix <sup>®</sup> G2 Clamp	760	15
I503008114	I500000114 + 3008210	114.3	BISOFIX <sup>®</sup> PIR50 + Bifix <sup>®</sup> G2 Clamp	1,680	15