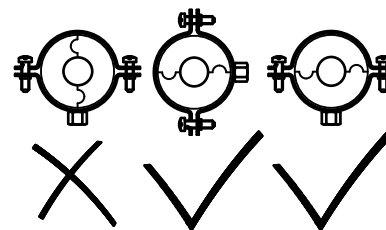
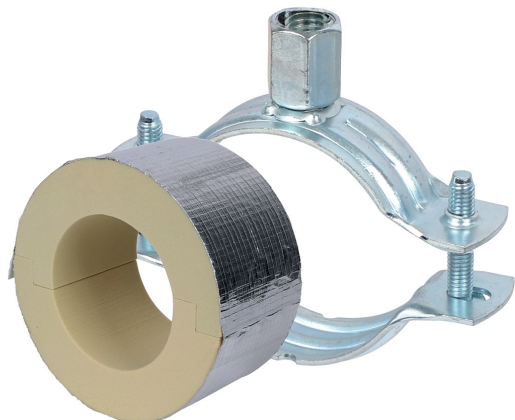


## BISOFIX® PIR50 + 2S

for insulated pipes 12.0 - 114.3 mm

(D 03 82)



### Features and Benefits

- for combination with rigid foam insulation
- cover joints with aluminium tape
- insulating pipe support with 2S clamp
- 2S clamp with M8/M10 connection nut
- does not contain CFC, HCFC, formaldehyde or cadmium
- fire class B2
- PIR density for  $D < 110\text{mm}$  =  $80\text{kg/m}^3$
- PIR density for  $D > 110\text{mm}$  =  $120\text{kg/m}^3$
- thermal conductivity  $\lambda$  (approx. value):  $0.30\text{ W/(mK)}$
- clamp: zinc plated
- temperature range  $-45\text{ }^\circ\text{C} - +105\text{ }^\circ\text{C}$

Part No.	D (mm)	Model	F <sub>a,z</sub> (N)	Pack 1
I503303012	12.0	BISOFIX® PIR50 + 2S Clamp	220	25
I503303015	15.0 - 16.0	BISOFIX® PIR50 + 2S Clamp	250	25
I503303018	17.2 - 18.0	BISOFIX® PIR50 + 2S Clamp	300	25
I503303020	20.0	BISOFIX® PIR50 + 2S Clamp	340	25
I503303022	21.3 - 22.0	BISOFIX® PIR50 + 2S Clamp	340	25
I503303025	25.0	BISOFIX® PIR50 + 2S Clamp	350	25
I503303028	26.9 - 28.0	BISOFIX® PIR50 + 2S Clamp	350	25
I503303032	32.0	BISOFIX® PIR50 + 2S Clamp	370	25
I503303034	33.7 - 35.0	BISOFIX® PIR50 + 2S Clamp	370	25
I503303040	40.0	BISOFIX® PIR50 + 2S Clamp	440	25
I503303042	42.4	BISOFIX® PIR50 + 2S Clamp	470	25
I503303050	50.0	BISOFIX® PIR50 + 2S Clamp	510	25
I503303048	48.3	BISOFIX® PIR50 + 2S Clamp	500	15
I503303054	54.0	BISOFIX® PIR50 + 2S Clamp	520	15
I503303057	56.0 - 57.0	BISOFIX® PIR50 + 2S Clamp	520	15
I503303060	60.3	BISOFIX® PIR50 + 2S Clamp	540	15
I503303064	64.0	BISOFIX® PIR50 + 2S Clamp	550	15
I503303070	70.0	BISOFIX® PIR50 + 2S Clamp	600	15
I503303076	76.1	BISOFIX® PIR50 + 2S Clamp	650	15
I503303089	88.9	BISOFIX® PIR50 + 2S Clamp	690	15
I503303102	101.6	BISOFIX® PIR50 + 2S Clamp	720	5
I503303108	108.0	BISOFIX® PIR50 + 2S Clamp	760	5
I503303114	114.3	BISOFIX® PIR50 + 2S Clamp	1,680	5